







Digital MultiStack System Stacking Unit

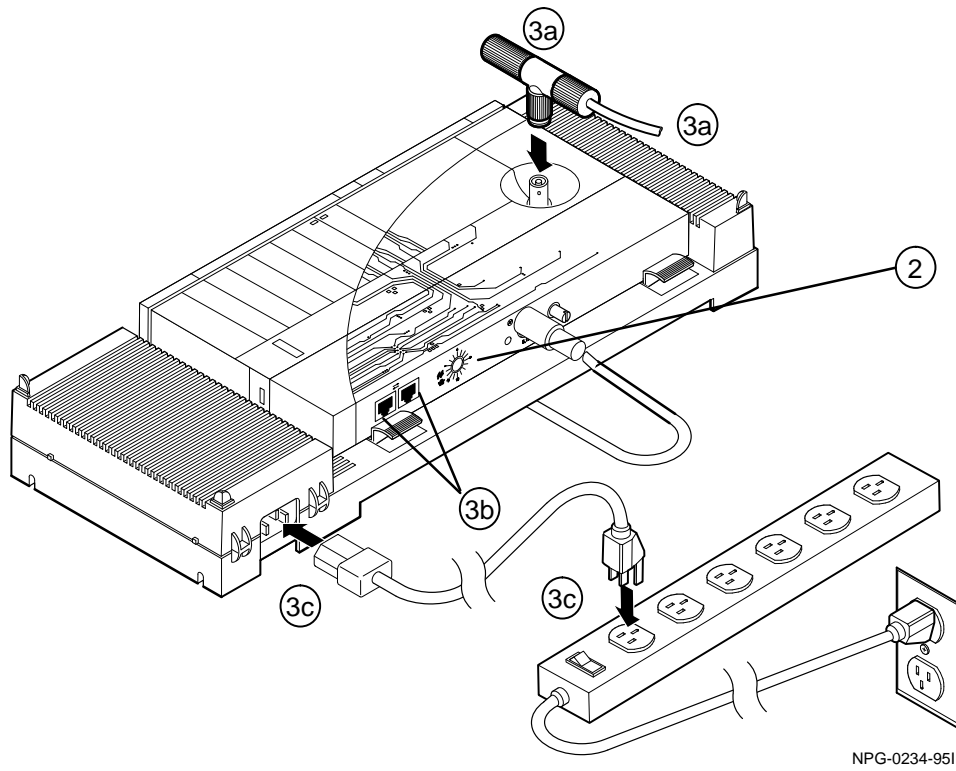
Five Easy Steps for Building a Stackable Ethernet Network

Step	Action	For more information see...								
1	<p>Unpack and inspect your Digital MultiStack System Stacking Unit, which includes a Digital 90-series module and a stacking unit with a backplane and power supply.</p>	<p><i>Digital MultiStack System Stacking Unit Installation and Configuration, Chapter 1</i></p>								
2	<p>Determine and set a unique position identifier for each stacking unit included in the stackable management domain.</p> <p>To manage a stack, set the position identifier dial (located on the back of your hub) so that the arrowhead on the dial points to the module's unique logical position in the stack. Set the position identifier as follows:</p> <table border="0" data-bbox="315 758 834 1041"> <thead> <tr> <th data-bbox="315 758 597 789">Device</th> <th data-bbox="597 758 834 789">Position Identifier</th> </tr> </thead> <tbody> <tr> <td data-bbox="315 831 597 863">Management Agent</td> <td data-bbox="597 831 834 863"></td> </tr> <tr> <td data-bbox="315 915 597 947">Bridge</td> <td data-bbox="597 915 834 947"></td> </tr> <tr> <td data-bbox="315 978 597 1041">Any other Digital 90-series module</td> <td data-bbox="597 978 834 1041">1 to 14</td> </tr> </tbody> </table>	Device	Position Identifier	Management Agent		Bridge		Any other Digital 90-series module	1 to 14	<p><i>Digital MultiStack System Stacking Unit Installation and Configuration, Chapter 3</i></p>
Device	Position Identifier									
Management Agent										
Bridge										
Any other Digital 90-series module	1 to 14									
3	<p>Connect the cabling on the Digital MultiStack System Stacking Unit as follows:</p> <ol style="list-style-type: none"> Connect a T-connector to each module's ThinWire BNC port (located on the top of the stackable hub), starting with the first hub in the stack. Both the first and last device in a ThinWire LAN segment must be terminated. Attach the ThinWire cabling to the T-connector connecting each module in the stack. If using management, connect the hub's management cable (UTP) to one of the MJ-8 management channel connectors, beginning with the first hub in the stack. Connect the other end of that management cable to the opposite MJ-8 management channel connector on the second hub in the stack. Continue this sequence up the stack to create a management domain. <p>To add to the management network's resiliency, connect the last device in the stack to the first device in the stack, creating a ring.</p> <p>DO NOT create a ring with the ThinWire data network.</p> <ol style="list-style-type: none"> Connect the power cord to the power supply connector on the rear of the stackable backplane and to the AC wall outlet or power strip and power-up. 	<p><i>Digital MultiStack System Stacking Unit Installation and Configuration, Chapter 3</i></p>								

Digital MultiStack System Stacking Unit

Five Easy Steps for Building a Stackable Ethernet Network

Step	Action	For more information see...
4	Set up the management agent to implement the stack manager.	Your management agent's documentation
5	Verify the operation of each hub and its network connections using the LEDs (power, self-test, and network connectivity) located on the stackable hub's modules.	<i>Digital MultiStack System Stacking Unit Installation and Configuration</i> , Chapter 3



NPG-0234-951