

Compaq PATHWORKS 32

Installation Guide

AA-RM6QA-TE

May 2000

Revision/Update Information:

This is a new manual.

Software Version:

Compaq PATHWORKS 32 Version 7.2

Compaq Computer Corporation
Houston, Texas

© 2000 Compaq Computer Corporation

COMPAQ, the Compaq logo, and VAX Registered in U.S. Patent and Trademark Office. DECnet, eXcursion, OpenVMS, PATHWORKS and Tru64 are trademarks of Compaq Information Technologies Group, L.P. Microsoft, Windows, and Windows NT, are trademarks of Microsoft Corporation. Intel is a trademark of Intel Corporation. UNIX and X Window System are trademarks of The Open Group. All other product names mentioned herein may be trademarks or registered trademarks of their respective companies.

Confidential computer software. Valid license from Compaq required for possession, use or copying. Consistent with FAR 12.211 and 12.212, Commercial Computer Software, Computer Software Documentation, and Technical Data for Commercial Items are licensed to the U.S. Government under vendor's standard commercial license.

Compaq shall not be liable for technical or editorial errors or omissions contained herein.

The information in this publication is subject to change without notice and is provided "AS IS" WITHOUT WARRANTY OF ANY KIND. THE ENTIRE RISK ARISING OUT OF THE USE OF THIS INFORMATION REMAINS WITH RECIPIENT. IN NO EVENT SHALL COMPAQ BE LIABLE FOR ANY DIRECT, CONSEQUENTIAL, INCIDENTAL, SPECIAL, PUNITIVE OR OTHER DAMAGES WHATSOEVER (INCLUDING WITHOUT LIMITATION, DAMAGES FOR LOSS OF BUSINESS PROFITS, BUSINESS INTERRUPTION OR LOSS OF BUSINESS INFORMATION), EVEN IF COMPAQ HAS BEEN ADVISED OF THE POSSIBILITY OF SUCH DAMAGES. THE FOREGOING SHALL APPLY REGARDLESS OF THE NEGLIGENCE OR OTHER FAULT OF EITHER PARTY AND REGARDLESS OF WHETHER SUCH LIABILITY SOUNDS IN CONTRACT, NEGLIGENCE, TORT, OR ANY OTHER THEORY OF LEGAL LIABILITY, AND NOTWITHSTANDING ANY FAILURE OF ESSENTIAL PURPOSE OF ANY LIMITED REMEDY.

The limited warranties for Compaq products are exclusively set forth in the documentation accompanying such products. Nothing herein should be construed as constituting a further or additional warranty.

Contents

Preface	v
Intended Audience	v
How to Order Additional Documentation	v
Introduction	1-1
Components of PATHWORKS 32.....	1-1
Accessing PATHWORKS 32 Information	1-2
Release Notes	1-2
What's New.....	1-3
Explore CD	1-3
PATHWORKS Web Page	1-3
Information Shelf	1-3
Installing PATHWORKS 32.....	2-1
Preparing for Installation	2-1
System Requirements	2-1
Setting the Network Adapter Address Value.....	2-3
Installing WinSock 2 (Windows 95)	2-4
Preinstallation Information	2-5
Using the LAN Manager Licensing Agent.....	2-6
Postinstallation Steps.....	2-6
Changing the LAN Network Adapter Bindings.....	2-6
Control Panel Network Option.....	2-7
Monitoring DECNDIS and DECnet Transport Activities Using the Windows NT Performance Monitor	2-8

Contents

Installing Network Connectivity.....3-1

Installing PATHWORKS 32 Network Connectivity Components...	3-1
Uninstalling PATHWORKS 32 Network Connectivity.....	3-9
Postinstallation Steps	3-9
Changing the TELNET Terminal Type	3-9
Release Notes.....	3-9

Installing eXcursion4-1

Installation Requirements.....	4-1
Setup Program.....	4-2
Installation Options	4-3
Overview of Using the Customized, Shared, or Administrative Installation Option.....	4-8
Installing eXcursion with the Customized, Shared, or Administrative Option.....	4-10
Postinstallation Tasks.....	4-18
Migrating from Windows NT to Windows 2000.....	4-19
Handling Expired OpenVMS Passwords.....	4-20
Installing the X Application Startup Program.....	4-21
Before You Install.....	4-22
Installing on Alpha Hosts Running DECnet on Compaq Tru64 UNIX	4-23
Installing on Compaq OpenVMS Hosts	4-23
International Considerations.....	4-24
Regional Language Settings	4-24
Hebrew-Specific Information	4-24
Using the Keyboard Manager	4-25
Uninstalling eXcursion.....	4-27

Installing PowerTerm 5255-1

Preparing for Installation.....	5-1
Installing PowerTerm 525	5-1
Uninstalling PowerTerm 525.....	5-4

Preface

The Compaq *PATHWORKS 32 Installation Guide* provides an overview of the product and detailed instructions on how to install the following components of PATHWORKS 32:

- Network Connectivity
- eXcursion
- PowerTerm

Intended Audience

This book is intended for all users of PATHWORKS 32. It assumes that you are familiar with personal computers and have some knowledge of Microsoft Windows 95, Microsoft Windows 98, Windows NT, or Windows 2000.

How to Order Additional Documentation

Use the following World Wide Web address for information about how to order additional documentation:

<http://www.openvms.compaq.com/pathworks>

If you need help deciding which documentation best meets your needs, call 1-800-282-6672.

1

Introduction

Compaq PATHWORKS 32 provides specialized connectivity features that let you connect your Windows 95, Windows 98, Windows NT 4.0, and Windows 2000 clients and servers to Compaq OpenVMS, Compaq Tru64 UNIX and other Windows 95, Windows 98, Windows NT, and Windows 2000 systems and use selected resources of those systems.

Components of PATHWORKS 32

The PATHWORKS 32 product is shipped on one CD-ROM, which contains the following components:

- **PATHWORKS 32 Network Connectivity**
 - Includes protected-mode DECnet and all the additional utilities required to deliver DECnet on Windows 95, Windows 98, Windows NT, and Windows 2000. This includes:
 - Transport Driver Interface (TDI) support for Windows NT.
 - Various DECnet utilities, such as NCP, NFT for Windows, FAL, and Job Spawner.
 - WinSock 2 service provider for DECnet on Windows 95, Windows 98, Windows NT, and Windows 2000 operating systems. Be sure to install Microsoft's WinSock 2 runtime components for Windows 95 (it is included as part of the operating systems for Windows 98, Windows NT, and Windows 2000).
 - Various system integration components.

For more information about Network Connectivity, refer to the Installing Network Connectivity chapter in this book and the PATHWORKS Information Shelf.

Introduction

- **eXcursion X Server**

Allows desktop users to run X Window System applications on remote OpenVMS or Tru64 UNIX systems.

For more information about the eXcursion X Server, refer to the Installing eXcursion chapter in this book, the *eXcursion User's Guide*, and the eXcursion online Help.
- **PowerTerm 525 Terminal Emulator**

Provides 32-bit terminal emulation, support for scrolling, and support for Password Assistant, which allows a single-login capability for selected PATHWORKS 32 applications.

For more information about the PowerTerm 525 terminal emulator, refer to the Installing PowerTerm chapter in this book and the PowerTerm online Help.
- **PATHWORKS 32 Application Programming Interfaces (APIs)**

PATHWORKS 32 provides an extensive set of APIs, which provide a consistent user interface across multiple transports and transport protocols.

See the Application Programming Interfaces online Help for details.

Accessing PATHWORKS 32 Information

This section contains information about using the What's New, Explore CD, Release Notes, and the PATHWORKS Web Page options on the Install Compaq PATHWORKS 32 splash screen. It also describes how to access the PATHWORKS Information Shelf, an online library of Network Connectivity and API Help files.

When you insert the PATHWORKS 32 CD-ROM in your system's CD-ROM drive, the PATHWORKS 32 splash screen should be displayed automatically. If the splash screen does not appear, or if you are installing from a shared directory on the network, double-click AUTOPLAY.EXE in the CD-ROM's top-level directory.

The splash screen provides access to the following options, in addition to Network Connectivity, eXcursion, and PowerTerm:

Release Notes

Click Release Notes on the Install Compaq PATHWORKS 32 splash screen to read the PATHWORKS 32 release notes.

What's New

Click What's New on the Install Compaq PATHWORKS 32 splash screen to read summaries of PATHWORKS 32 new features.

Explore CD

Click Explore CD on the Install Compaq PATHWORKS 32 splash screen to access the PATHWORKS 32 CD-ROM directories and files.

PATHWORKS Web Page

Click PATHWORKS Web Page to go to the Web page for information about PATHWORKS Server and PATHWORKS Client.

Information Shelf

After you complete the installation of PATHWORKS 32 Network Connectivity, you can access the PATHWORKS Information Shelf, which contains online Help files for Network Connectivity and Application Programming. To access the Information Shelf:

Click Start → Programs → PATHWORKS 32 → PATHWORKS Information Shelf

2

Installing PATHWORKS 32

This chapter contains information on installing and setting up the *Compaq PATHWORKS 32* software. The following sections discuss:

- Preparing for installation
- Postinstallation steps
- Monitoring DECNDIS and DECnet transport activities using the Windows NT Performance Monitor

Preparing for Installation

This section discusses system requirements and preinstallation information. Read this information carefully so that the installation and configuration of your system proceeds smoothly.

System Requirements

PATHWORKS 32 requires the following minimum hardware and software configurations:

On Windows 95 or Windows 98:

- An Intel compatible system referenced in the Microsoft Hardware Compatibility List (HCL) for Windows 95 or Windows 98.
- The minimum memory specified for Windows 95 or Windows 98 in the Microsoft HCL or at least 12 MB of RAM for Windows 95 or 16 MB of RAM for Windows 98 with additional memory and disk resources for PATHWORKS 32.
- Minimum disk space for PATHWORKS 32:
 - Network Connectivity (Typical Install): 6 MB

Installing PATHWORKS 32

- eXcursion (Express Installation): 25 MB
- PowerTerm 525: approximately 15 MB
- Windows 95 or Windows 98 software.
- For Windows 95, the WinSock 2 add-on from Microsoft (included on the PATHWORKS 32 kit). See the WinSock 2 section for more information.
- One of the following:
 - Ethernet or FDDI adapter and driver, or a modem supported by Windows 95 or Windows 98
 - Ethernet and FDDI adapters that support a software-configurable network address using the Network Address keyword

Note

If you use FDDI in your environment, configure the FDDI driver to emulate Ethernet by performing the following steps:

1. Run REGEDIT on each Windows 95 or Windows 98 system that uses FDDI.
2. Set the FDDI MaxFrameSize parameter to a value of 1498. If the MaxFrameSize parameter is already defined in a system registry and its value is less than 1498, then no change is needed.

On Windows NT or Windows 2000:

- For Windows NT, an Intel or Alpha system, or for Windows 2000, an Intel system referenced in the Microsoft Hardware Compatibility List (HCL) for Windows NT or Windows 2000.
- The minimum memory referenced for Windows NT or Windows 2000 in the Microsoft HCL, with additional memory and disk resources for PATHWORKS 32.
- Minimum disk space for PATHWORKS 32:
 - Network Connectivity (Typical Install): 6 MB
 - eXcursion (Express Installation): 25 MB
 - PowerTerm 525: approximately 15 MB

Installing PATHWORKS 32

- Windows NT or Windows 2000 supported Ethernet or FDDI adapter and driver or a modem.
- Windows NT software that includes Service Pack 3, or later.
- Windows 2000 software.
- An appropriate transport protocol must be installed on the Windows NT operating system for the WinSock 2 installation to work correctly. The protocol can be TCP/IP, NetBEUI, or any other transport protocol that supports Windows NT. If the transport protocol is not already installed, select the Network icon in Control Panel and add the transport protocol you want to use. After you install PATHWORKS 32, you can disable the transport protocol, if you wish.

Note

If you use FDDI in your environment, configure the FDDI driver to emulate Ethernet, by performing the following steps:

1. Run REGEDIT on each Windows platform that uses FDDI.
2. Set the FDDI MaxFrameSize parameter to a value of 1498. If the MaxFrameSize parameter is already defined in a system's registry and its value is less than 1498, then no change is needed.

-
- You must have full Administrator privileges to install PATHWORKS 32 on a Windows NT or Windows 2000 server or workstation, because the Setup program modifies system registry entries.
 - Ethernet and FDDI adapters that support a software-configurable network address using the NetworkAddress keyword. If they do not, you will be unable to use DECnet. Refer to the Setting the Network Adapter Address Value section for information about the DNP0055 error message.

Setting the Network Adapter Address Value

If the address of the network adapter is not set to the correct value, the following error message is displayed:

```
>DNP0055: Cannot start DECnet: adapter's network address is not set to AA-00-04-00-xx-yy.
```

Installing PATHWORKS 32

The value of the network adapter address is set by the Setup program using the NetworkAddress keyword in the registry and is supported with NDIS V3.1 drivers (for Windows 95 and Windows 98) and V4.0 and V5.0 (for Windows NT and Windows 2000) that have a software-configurable station address. Some drivers included with Windows 95, Windows 98, Windows NT, or Windows 2000 do not support this feature and might not work with PATHWORKS 32. Please read the section called Setting Properties for Network Components in the online PATHWORKS 32 release notes, PWREADME.TXT, for detailed information.

Installing WinSock 2 (Windows 95)

The WinSock 2 runtime components for Windows 95 are available from Microsoft and as part of PATHWORKS 32.

Developers need the current version of the WinSock 2 Software Development Kit (SDK), which is available at the following location:

http://www.microsoft.com/windows95/downloads/contents/WUAdminTools/S_WUNetworkingTools/W95Sockets2/Default.asp

If you do not install WinSock 2, the following PATHWORKS 32 components will not work on Windows 95:

- eXcursion
- CTERM (which affects PowerTerm 525, over CTERM)—does not run over DECnet without WinSock 2

Be sure to remove any previous WinSock 2 software before proceeding. Run **C:\WINDOWS\WS2BAKUP\WS2BAKUP.BAT** and delete the directory WS2BAKUP.

To install WinSock 2, you must run **\W95\WINSOCK2\WS2SETUP.EXE** or the version you downloaded from the Web pointer above, and then reboot your system.

The following information covers two installation methods:

- You install PATHWORKS 32 V7.2 and then run **WS2SETUP.EXE** (recommended).

In this case, running **WS2SETUP.EXE** after you install PATHWORKS 32 automatically enables WinSock 2 DECnet support. You must reboot for the changes to take effect.

- You run **WS2SETUP.EXE** first and then install PATHWORKS 32 V7.2.

Installing PATHWORKS 32

In this case, you must manually enable WinSock 2 DECnet support. After you install PATHWORKS 32 and reboot, run the **PWS2INST.EXE** program located in your PW32 directory.

Preinstallation Information

To avoid potential problems, read the following information carefully before beginning the installation.

Note

The release notes for PATHWORKS 32 Network Connectivity contain important installation details. You must read these release notes before starting the installations. The release notes file (PWREADME.TXT) on the PATHWORKS 32 CD-ROM is located in the top-level directory.

For supported platforms:

- If you are using DECnet, you must know the system's DECnet node name and address before beginning the installation.
- The Setup program prompts you with a default destination directory of **C:\PW32** when no previous version of PATHWORKS was installed on the personal computer, or when **C:\PW32** was the location of a previous PATHWORKS 32 installation. Or, the Setup program prompts you with the directory where prior PATHWORKS client software is installed (for example, **C:\PW**).
- To keep the DECnet databases from previous PATHWORKS installations, copy your **PW*.DAT** and **DECLAT.INI** files to a temporary directory before installing PATHWORKS 32 Network Connectivity. After the installation, copy the **PW*.DAT** and **DECLAT.INI** files into the directory where you just installed PATHWORKS 32.
- In a multiboot Intel configuration, do not install the Windows 95 or Windows 98 version of PATHWORKS 32 in a directory that contains the Windows NT or Windows 2000 version of PATHWORKS 32.
- If you want to change your configuration after installation, you should run the Setup program again. You should not remove individual PATHWORKS 32 components by using Control Panel's Add/Remove Programs option.

Installing PATHWORKS 32

Windows NT and Windows 2000 Systems Only

- PATHWORKS 32 on a Windows NT 4.0 or Windows 2000 system is not compatible with prior PATHWORKS clients for Windows NT 3.x systems (such as PATHWORKS 4.1B for Windows NT).
- You must have full Administrative privileges to install PATHWORKS 32 on Windows NT or Windows 2000.

Windows 95 and Windows 98 Systems Only

- On Windows 95 or Windows 98, PATHWORKS 32 does not support a configuration in which the workstation does not have its own Windows 95 or Windows 98 system directory and Windows 95 or Windows 98 Registry. For example, PATHWORKS 32 does not support a Windows 95 floppy boot configuration.
- If you plan to use the Remote Access features of PATHWORKS 32 under Windows 95, you must install Microsoft Dialup Networking software prior to installing PATHWORKS 32. To do this, perform the following steps:
 1. Select Control Panel, and double-click Add/Remove Programs.
 2. Select the Windows Setup tab, and choose Communications.
 3. Click Details. Ensure that the Dial-Up Networking box is checked.
 4. Click OK.
 5. Click OK again, and insert the Windows 95 disk(s) when prompted.

Using the LAN Manager Licensing Agent

See the PATHWORKS 32 Software Product Description (SPD) and the PATHWORKS Information Shelf for information about the LAN Manager Licensing Agent.

Postinstallation Steps

The following sections explain some postinstallation steps that you need to consider.

Changing the LAN Network Adapter Bindings

PATHWORKS 32 can be used only on a single network adapter. This section applies to LAN adapters only. You can have the DDCMP pseudo-adapters loaded and bound to DECnet simultaneously with a LAN adapter. DECnet, however, uses only one of them at any given time.

Installing PATHWORKS 32

If you have multiple network adapters, the Setup program binds PATHWORKS 32 protocols to all the Ethernet, Token Ring, or FDDI adapters on the system. You must change the adapter bindings before restarting the system, as follows:

On Windows 95:

1. Display the Configuration dialog box, as follows:
Start → Settings → Control Panel → Network → Configuration
2. Select the network component that bound to the undesired adapter; for example, click PATHWORKS NDIS Support.
3. Click Properties and then select the Bindings tab.
4. Uncheck the unwanted binding; for example PATHWORKS NDIS Support. You might need to repeat the steps to remove all the undesired adapters to which PATHWORKS 32 bound.
5. Click OK and reboot the system when requested.

On Windows 98:

1. Display the Configuration dialog box, as follows:
Start → Settings → Control Panel → Network → Configuration
2. Select the network component that bound to the undesired adapter; for example, click PATHWORKS NDIS Support -> PCI Fast Ethernet DEC 21143 Based Adapter.
3. Click the Remove button.
4. Click the OK button and reboot the system when requested.

On Windows NT and Windows 2000:

The process of changing the adapter bindings is automated.

Control Panel Network Option

The Network option on Control Panel allows you to perform a subset of the Network Control Program (NCP) functions, such as the following:

- Changing the executor node name and address
- Maintaining a list of remote node names, addresses, user names, and passwords

To perform these functions from the Control Panel, do the following:

On Windows 95 and Windows 98:

Installing PATHWORKS 32

1. Display the Configuration dialog box, as follows:

Start → Settings → Control Panel → Network → Configuration

2. Click the network component you want to modify.
3. Click Properties.

On Windows NT:

1. Display the Protocol dialog box, as follows:

Start → Settings → Control Panel → Network → Protocol

2. Click the network component you want to modify.
3. Click Properties.

On Windows 2000:

1. Display the Local Area Connection properties, as follows:

Start → Settings → Network and Dial-up Connections

2. Double-click the Local Area Connection icon and then click the Properties button.
3. Click the network component you want to modify.
4. Click Properties.

Monitoring DECNDIS and DECnet Transport Activities Using the Windows NT Performance Monitor

PATHWORKS 32 provides DECnet performance data to the Windows NT Performance Monitor. The extended object PATHWORKS 32 Datalink adds performance counters describing DECNDIS data link activities. The extended object PATHWORKS 32 DECnet adds performance counters describing DECnet transport activities.

To use the Performance Monitor, perform the following steps on your Windows NT system:

1. Click Start → Programs → Administrative Tools (Common) → Performance Monitor.
2. Click the Edit menu and select Add to Chart.
3. Highlight PATHWORKS 32 Datalink or PATHWORKS 32 DECnet in the Options drop-down list.
4. Click Add.

Installing PATHWORKS 32

5. Click Done.

To use the Performance Monitor, perform the following steps on your Windows 2000 system:

1. Click Start → Settings → Control Panel → Administrative Tools → Performance.
2. Select \Console Root\System Monitor on the Tree tab.
3. Click the “+” button in the right-hand window’s tool bar.
4. Highlight PATHWORKS 32 Datalink or PATHWORKS 32 DECnet in the Performance Object drop-down list.
5. Highlight the All Counters radio button or select the desired counters from the list.
6. Click Add.
7. Click Close.

See the Microsoft online Help on the Performance Monitor for more information.

3

Installing Network Connectivity

This chapter contains information on installing the Network Connectivity component of *Compaq PATHWORKS 32*. The following sections discuss:

- Installing Network Connectivity
- Uninstalling Network Connectivity
- Postinstallation Steps
- Release Notes

Installing PATHWORKS 32 Network Connectivity Components

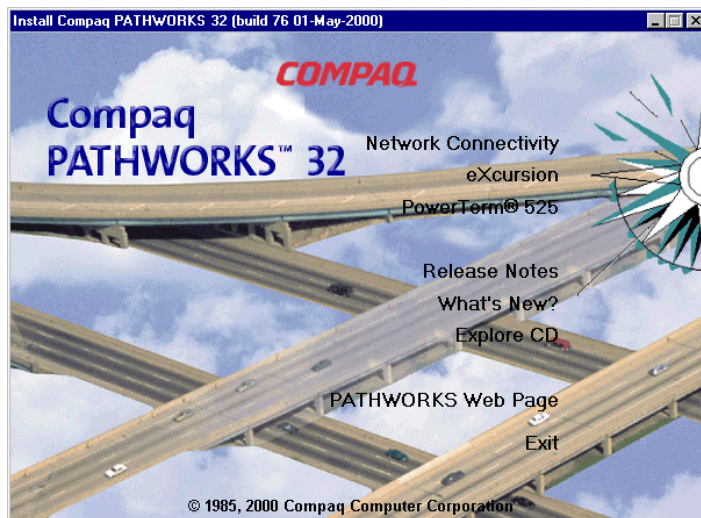
Follow these steps to install the PATHWORKS 32 Network Connectivity components:

1. Insert the PATHWORKS 32 CD-ROM into the system's CD-ROM drive.

If you are installing from a network kit, instead of CD-ROM media, run or double-click on AUTOPLAY.EXE in the kit's top-level directory.

Installing Network Connectivity

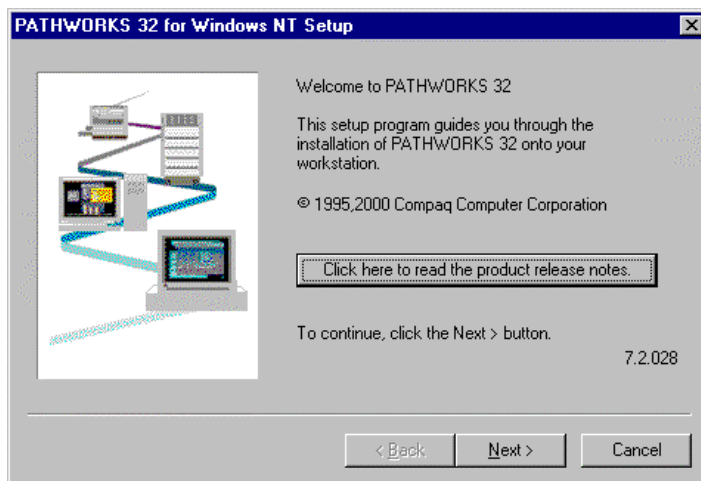
The Install Compaq PATHWORKS 32 window is displayed.



If the Install Compaq PATHWORKS 32 window does not appear, you do not have autoplay enabled for your CD-ROM drive; in this case, you can start Windows Explorer and double-click AUTOPLAY.EXE in the CD-ROM's top-level directory.

2. Click the Network Connectivity option to start the installation.

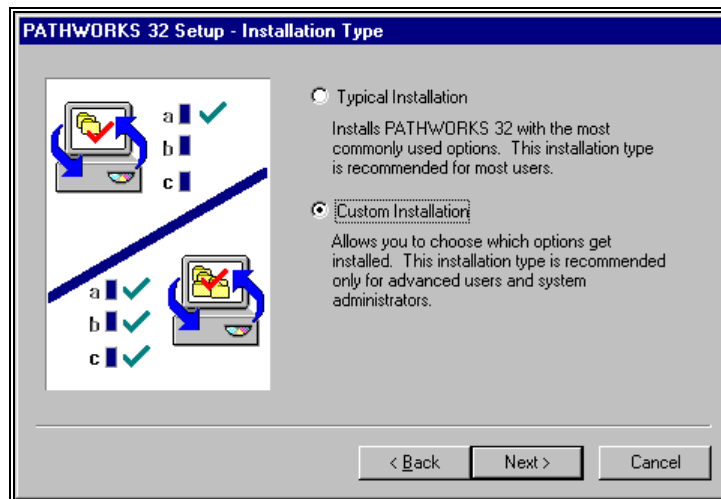
The Setup program displays its welcome window.



Installing Network Connectivity

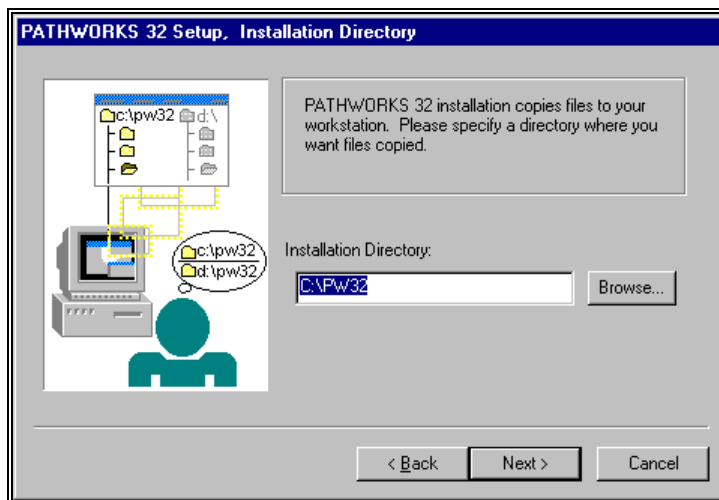
Click the Release Notes button and read this document, if you have not already done so.

3. Click Next when you are ready to continue. The Installation Type window is displayed.



4. Select a typical or custom installation.
 - Click Typical Installation to install the most commonly used options. When you select Typical Installation, you do not see the Options window because default options are selected for you. The Setup program installs the following options when there are no previous versions of PATHWORKS 32 installed on the system:
 - DECnet
 - LAT
 - Licensing
 - If you have a previous version of PATHWORKS 32 installed on the system and you click Typical Installation, the Setup program reinstalls the existing PATHWORKS 32 components it finds on the system.
 - Click Custom Installation when you want to choose the options to be installed. This option is recommended for advanced users only.
5. Click Next. The Installation Directory window is displayed.

Installing Network Connectivity



The Setup program prompts you with a default destination directory (either C:\PW32 or the location of a previous PATHWORKS installation, if one exists).

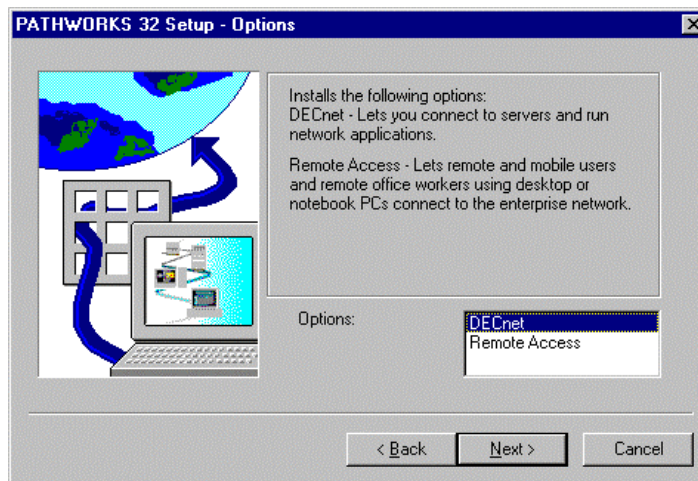
6. Click Next to accept the default value, or click Browse to identify another installation directory.

Note

In a multiboot Intel configuration, do not install the Windows 95 or 98 version of PATHWORKS 32 in a directory that contains the Windows NT or Windows 2000 version of PATHWORKS 32.

Installing Network Connectivity

- If you are performing a custom installation, the Options window is displayed, as follows:



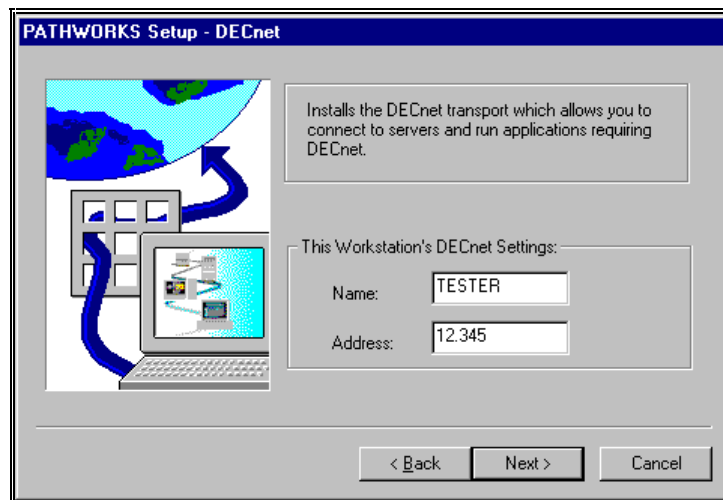
- If you are performing a typical installation, you can proceed to step 8.
7. Select one of the options in the Options window. Click Next to continue with the custom installation procedure.

Note

On Windows NT, if you select the Remote Access option, the Setup program automatically selects the DECnet option to ensure that DDCMP support is installed. The Remote Access feature does not work on Windows NT without DDCMP. Also note that PATHWORKS 32 DDCMP only works over a dial-up line.

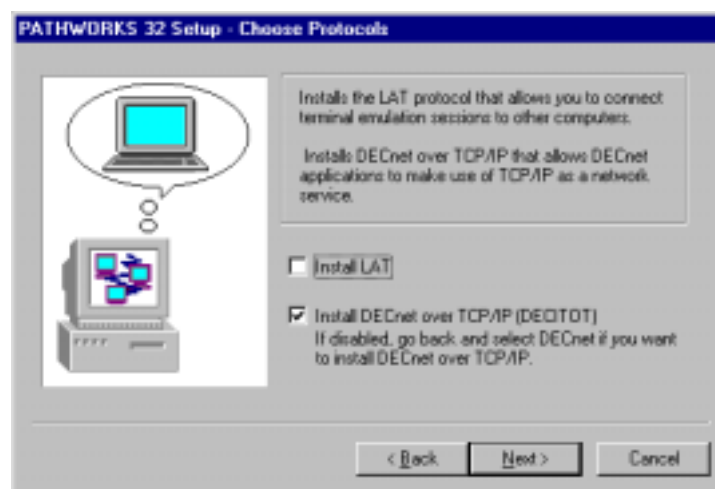
If you selected DECnet, you see its Setup window.

Installing Network Connectivity



- a. Enter the system's six-character DECnet name and address and click Next. In this example, TESTER is used for the name and 12.345 for the address. See your system administrator for the DECnet name and address of your system, if you do not know the correct values.

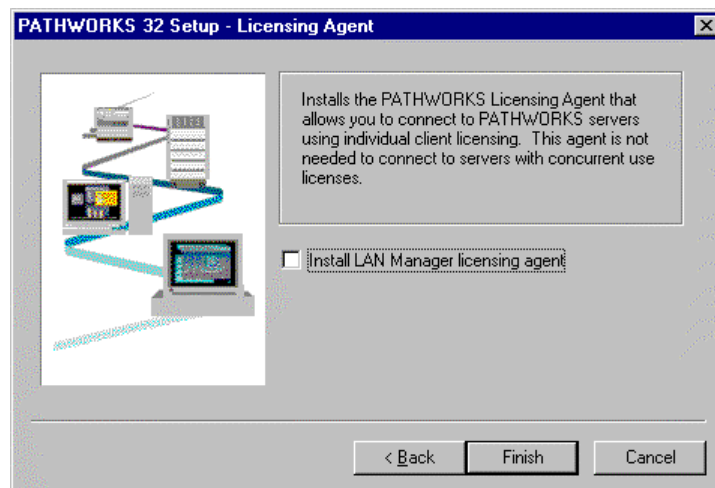
The Choose Protocols window is displayed.



Installing Network Connectivity

- b. Click one, both, or none of the options. Then, click Next to continue.

The Licensing Agent window is displayed.



- c. Click the Install LAN Manager licensing agent option in the Licensing Agent window.

The PATHWORKS 32 Licensing Agent lets you connect to PATHWORKS servers using individual client licensing. The agent is not needed to connect to servers with concurrent use licenses. See your system administrator for information about the type of licenses in use by your group or company. See the PATHWORKS 32 Software Product Description (SPD 56.33.xx) included in the product box for information about the license types.

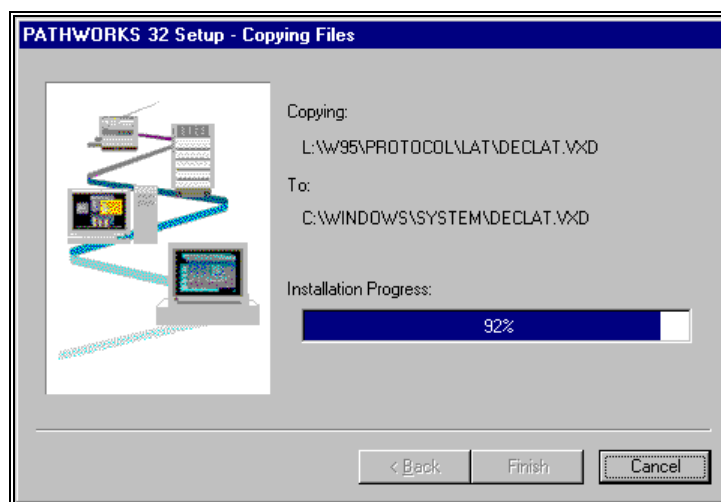
Installing Network Connectivity

Note

The Setup program defaults to predefined licenses during a fresh install of the PATHWORKS 32 Licensing Agent. The default licenses for the LAN Manager licensing agent are DEC-PWLMXXXCA07.02 and DEC-PWXXWINAT07.02.

If you wish to change your licenses before your computer reboots, do the following:

- Do not reboot the machine at the end of Setup.
 - From the Windows RUN menu, run PNLCFG.EXE for the LAN Manager Licensing Agent. You might experience a delay while the licenses are being verified by the configuration program.
 - Reboot your computer.
- d. Click Finish to complete the custom installation.
- The Copying Files window is displayed.

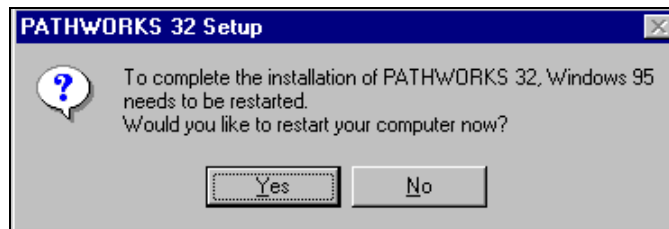


The Copying Files window monitors the progress of the file transfer. When the installation progress value reaches 100%, all installation files have been copied.

Installing Network Connectivity

A window similar to the following appears when the installation is complete.

8. Click Yes to complete the installation and restart your computer.



Installing Network Connectivity

Uninstalling PATHWORKS 32 Network Connectivity

You can remove the installation of PATHWORKS 32 Network Connectivity from your system by choosing the PATHWORKS 32 Uninstall option from the Start menu, as follows:

Start → Programs → PATHWORKS 32 → PATHWORKS 32 Uninstall

Once you start uninstalling, you can view a README file that contains more information about the Uninstall procedure.

Postinstallation Steps

The following sections explain some postinstallation steps that you need to consider.

Changing the TELNET Terminal Type

You can change the type of terminal that PWTELNT supports by creating a registry key and entering the terminal type as the default entry. The registry location is as follows:

```
\\HKEY_LOCAL_MACHINE\SOFTWARE\  
DigitalEquipmentCorporation\PATHWORKS\TE\TELNET
```

Changing the terminal type is necessary only for certain UNIX connections. Do not add this registry key unless you know it is necessary.

Release Notes

Release Notes contain important information pertaining to the installation, use, and operation of the PATHWORKS 32 software. To read the PATHWORKS 32 Release Notes, click Release Notes on the Install Compaq PATHWORKS 32 window.

As noted previously in this chapter, you should also read the Release Notes files on the PATHWORKS 32 CD-ROM. Following are the locations on the CD-ROM:

- For the Network Connectivity components, PWREADME.TXT in the top-level directory
- For eXcursion V7.2, NOTES_EN.TXT in the \Xcursion\Xcursion\Common directory
- For PowerTerm 525, PTREADME.TXT in the \PTW\INTEL and \PTW\ALPHA directories (same file)

4

Installing eXcursion

This chapter discusses how to install eXcursion Version 7.2 and provides information on the following:

- Installation requirements
- Setup program
- Installation options
- Postinstallation tasks
- Handling expired OpenVMS passwords
- X Application Startup Program
- International considerations
- Uninstalling eXcursion

Before you begin, read the release notes, located on the CD-ROM in the following location: NOTES_EN.TXT (English only) in the `\Xcursion\Xcursion\Common` directory.

Installation Requirements

This section describes software and hardware that you need to install eXcursion for the supported Windows platforms.

Installing eXcursion

The following table lists and describes eXcursion requirements:

Item	Requirement
PC hardware	Same as for Windows 95, Windows 98, Windows NT, and Windows 2000.
PC software	Windows 95, Windows 98, Windows NT 4.0, or Windows 2000.
Network Connection	DECnet and Compaq PATHWORKS 32 or TCP/IP, included as part of the operating system installation, must be installed.
Memory	Same as for Windows 95, Windows 98, Windows NT, and Windows 2000. Memory requirements of the server might vary, depending on the X applications being serviced.
Disk space	eXcursion and one set of standard fonts require 16 to 18 MB. Entire installation of eXcursion components requires 55 MB.

Setup Program

Use the eXcursion Setup program to:

- Install eXcursion software on your PC's hard drive or on a network service.
- Configure your PC to use eXcursion software already located on a network service.
- Upgrade eXcursion software located on your PC or a network service.

When you use Setup, keep the following guidelines in mind:

- Allow approximately 15 minutes for the installation. The time it takes to install eXcursion depends on your hardware and software configuration and on the components you choose to install.
- Usually, only system administrators have the privileges required to copy files to a network service.

Installing eXcursion

Note

If you install on a multiboot system, Setup only installs the files needed by the operating system that is running. Therefore, if you plan to run eXcursion under more than one system, you have to run eXcursion Setup on each system. You can install to the same directory each time.

Installation Options

When you use Setup to install eXcursion, you must choose one of four installation options:

Express—Provides a basic eXcursion installation. The Express installation installs the default eXcursion files, including:

- Executables for your platform
- 75 dpi fonts
- Miscellaneous fonts
- Language-specific files that correspond to the language for which Windows is configured
- Industry-standard keyboard files

Setup copies all necessary files to your hard drive and completes the installation.

Customized—Allows you to customize your installation to suit your working environment. When you choose this option, Setup installs the same files as for the Express option, but allows you to add and remove the following components:

- Executables (hardware and software)
- Fonts
- Languages
- Key definitions
- Host support files

Shared—Allows you to install eXcursion on a file server. When you install to a PC from the shared installation file service, only a small number of required system files are copied to the hard disk of the PC. All other eXcursion files remain on the file server.

Installing eXcursion

The Shared option selects, by default, all distribution files, but you can deselect the files you do not want copied.

No eXcursion program folders or icons are created on the machine that is running Setup, if the share is on a different machine. If the file server will also run eXcursion, Setup should be run from the newly created copy.

Administrative—Allows you to create a copy of the eXcursion distribution media on a file server. Users can then run Setup at any time to install eXcursion on their PCs or workstations. The Administrative option default selects all distribution files for copying, but allows you to deselect the files you do not want copied.

Note

Only system administrators or users with system privileges can install using the Shared and Administrative options.

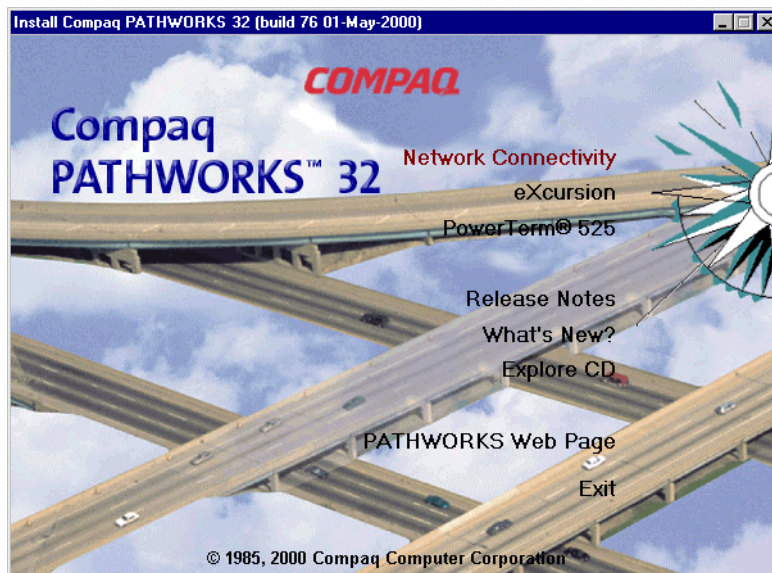
The procedure for using the Express installation option is described in the next section. The procedure for installing with the Customized, Shared, and Administrative options follows the Express option procedure.

To install eXcursion using the Express installation option, follow these steps:

1. Unless you are installing from a previous administrative installation, insert the Compaq PATHWORKS 32 compact disc (CD-ROM) in the CD-ROM drive on your Windows system.

The Install Compaq PATHWORKS 32 screen (Figure 4-1 Install Compaq PATHWORKS 32 Screen) appears automatically if your system is configured to search for an AUTOPLAY.INF in the media's top-level directory. Otherwise, you can start Windows Explorer and double-click the AUTOPLAY.EXE file in the top-level directory of the CD-ROM.

Figure 4-1 Install Compaq PATHWORKS 32 Screen

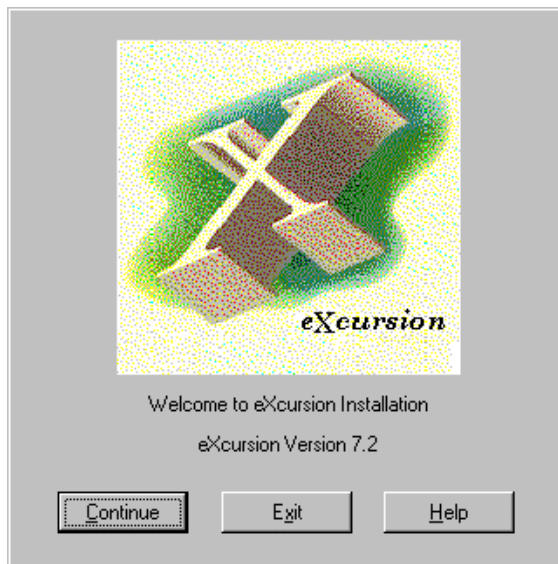


2. Click the eXcursion option to start the installation.

The eXcursion Setup program displays the Welcome screen to welcome you to eXcursion Setup.

Installing eXcursion

Figure 4-2 eXcursion Welcome Screen

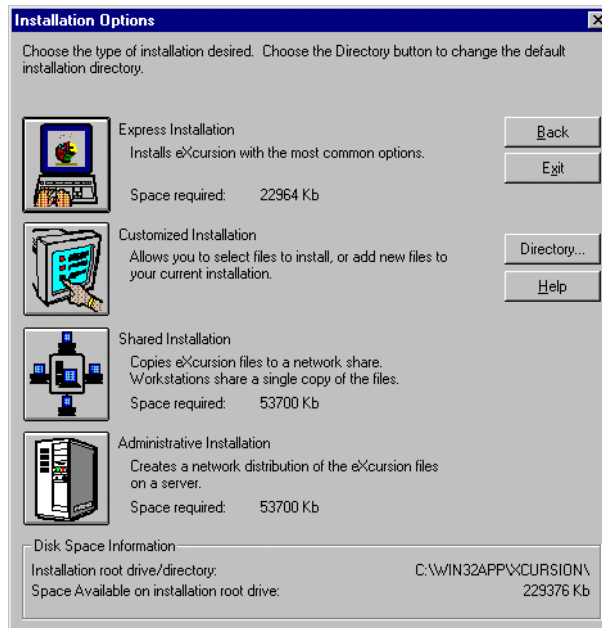


3. Click Continue to proceed. The system displays the Installation Options dialog box (Figure 4-6 Installation Options Dialog Box).

If you are installing from a shared installation, you should continue at step 5.

Installing eXcursion

Figure 4-3 Installation Options Dialog Box

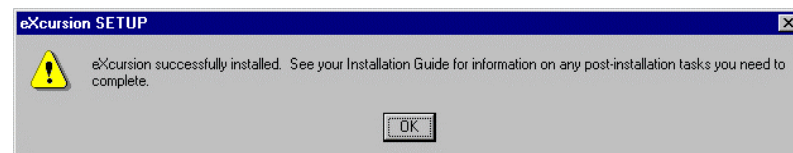


4. Click Directory if you want to install eXcursion on a device or directory other than the one shown at the bottom of the dialog box. The Change Directory dialog box is displayed (Figure 4-7 Change Directory Dialog Box).

5. Click Express Installation.

Setup copies eXcursion files into a default directory or the directory that you have specified, and then displays the Successful Installation message (Figure 4-15 Successful Installation Message).

Figure 4-4 Successful Installation Message



Setup creates the icons for Control Panel, Help, Release Notes, and the eXcursion X server and adds them to your Start menu.

Installing eXcursion

You can copy icons from the window to your desktop for more convenient access. Use the right mouse button to drag an icon from the window to the desktop, then click Create Shortcut Here.

If space is unavailable for copying the files required for an Express Installation, Setup displays a dialog box to inform you of the space problem. The dialog box gives the option of returning to the Installation Options dialog box.

Overview of Using the Customized, Shared, or Administrative Installation Option

When you select the Customized, Shared, or Administrative installation option, you can provide Setup with information on the following:

- Server executables
- Fonts
- Languages
- Key definition files (Keysyms)

Server Executables

Server executables are files that enable you to run eXcursion on your specific type of system. The type of executables that you specify depends on the type of system on which you are installing eXcursion. System executables include:

- eXcursion Server (Alpha)
- eXcursion Server (Intel)
- Host support files

If you choose the Shared or Administrative installation option:

- You can choose to install multiple server executables. For example, if you are installing eXcursion on Windows NT from a CD-ROM to a network service for multiple users with different software and hardware platforms, you may want to install all three Windows NT executables.
- If you are reinstalling eXcursion and want to install only a limited number of system components, you can choose to disable the installation of specific executable files.

Installing eXcursion

If you choose the Customized installation option:

- You can select the specific type of system you are running. For example, if you are using Windows NT on an Intel based PC and you are installing eXcursion files for your PC only, you can select only the eXcursion Server (Intel) executables.

Fonts

At least one set of font files is required to run eXcursion. If you are installing font files in a multiuser location, you may want to install all eXcursion font files, but note that doing this significantly increases installation time.

Your font options are shown in Table 4–1 Font Options.

Table 4–1 Font Options

Font Set	Description
Standard – 75 dpi	Bitmap fonts for a VGA monitor with a resolution that is lower than 100 dots per inch
Standard – 100 dpi	Bitmap fonts for a high-resolution monitor with 100 (or more) dots per inch resolution
Miscellaneous (required)	A variety of text and special character (such as a cursor font) bitmap fonts
Type 1	Scaleable (outline) typefaces in Adobe Type 1 format
Speedo	Scaleable (outline) typefaces in Bitstream's Speedo format
Hebrew – 75 dpi	Standard Hebrew bitmap fonts for VGA monitors with a resolution that is lower than 100 dots per inch
Hebrew – 100 dpi	Standard Hebrew bitmap fonts for high-resolution monitors with 100 (or more) dots per inch resolution

When installing fonts for eXcursion, note the following:

- You should install either the Standard 75 dpi or the Standard 100 dpi fonts. If you are unsure which type of monitor you have, install the Standard 75 dpi fonts.
- The Miscellaneous font set is required. It contains the default text and cursor fonts.

Installing eXcursion

Some X applications use high-resolution fonts and others use low-resolution fonts. You can install both sets of fonts and add both sets to your font path.

Languages

You can specify the languages you want to install for the eXcursion Control Panel user interface, online help files, and messages.

If you need multiple languages, select the desired check boxes during the installation.

Key Definition Files

Key definition files allow you to install key definitions for a particular keyboard type. Most Compaq keyboards are industry-standard Enhanced 101 or 102 keyboards.

Your keyboard options include:

- Enhanced 101/102 keyboard
- Digital LK250
- Digital LK450
- Digital LK411

Note

Keyboard drivers that support the LK450 will support the LK461.

If you are installing key definition files in a multiuser location, you can install key definition files for all keyboard types.

Installing eXcursion with the Customized, Shared, or Administrative Option

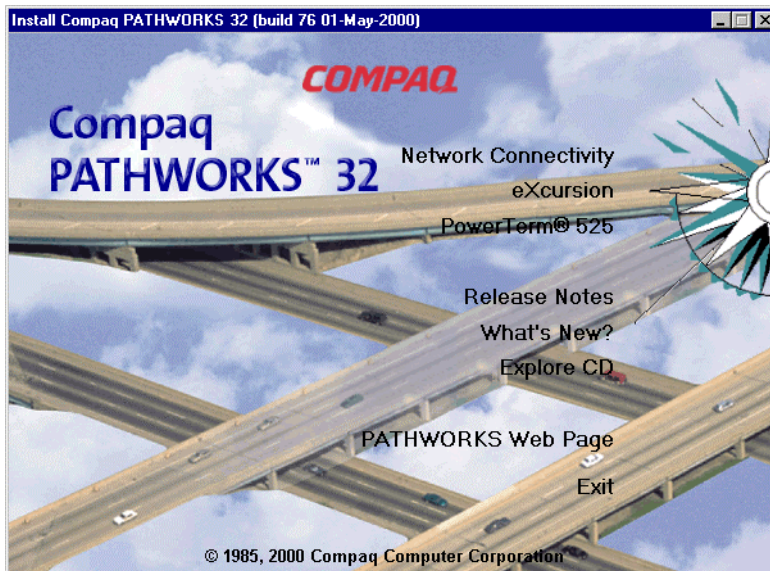
Follow these steps to install eXcursion using the Customized, Shared, or Administrative installation option:

1. On your Windows system, insert the Compaq PATHWORKS 32 compact disc (CD-ROM) in the CD-ROM drive.

The Install Compaq PATHWORKS 32 screen appears automatically if your system is configured to search for an AUTOPLAY.INF in the media's top-level directory. Otherwise, you can start Windows Explorer and double-click the AUTOPLAY.EXE file in the top-level directory of the CD-ROM.

Installing eXcursion

Figure 4-5 Install Compaq PATHWORKS 32 Screen



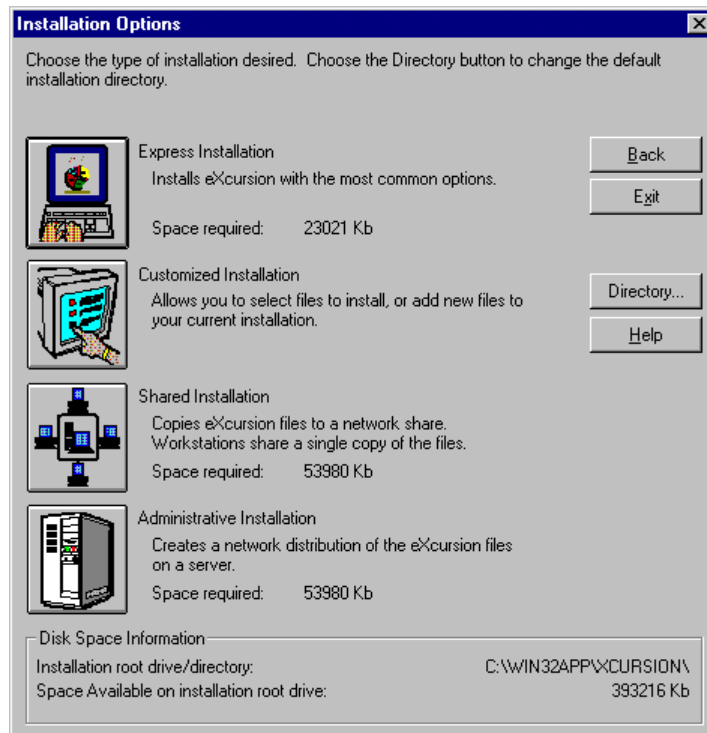
2. Click the eXcursion option to start the installation.
The eXcursion Setup program displays the eXcursion Welcome screen (see Figure 4-2).
3. Click Continue to proceed. The system displays the Installation Options dialog box (Figure 4-6 Installation Options Dialog Box).

Installing eXcursion

Note

If a user is installing from a shared network service, eXcursion Setup omits the Installation Options dialog box.

Figure 4-6 Installation Options Dialog Box



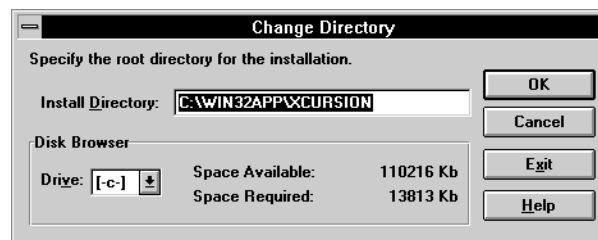
4. Click Directory if you want to install eXcursion on a device or directory other than the one shown at the bottom of the dialog box. The Change Directory dialog box is displayed (see Figure 4-7 Change Directory Dialog Box).

Installing eXcursion

Note

When you are performing an administrative install from the CD-ROM, the destination directory name must meet the 8.3 naming convention.

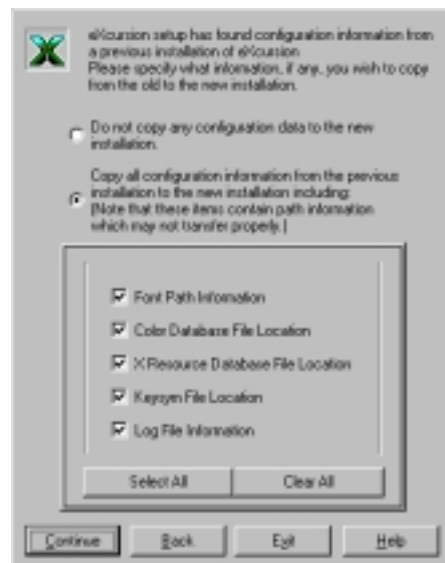
Figure 4-7 Change Directory Dialog Box



5. Make your directory change and click OK to return to the Installation Options dialog box.

If Setup detects an installation prior to V7.0, it displays the eXcursion Setup dialog box (Figure 4-8 eXcursion Setup Dialog Box):

Figure 4-8 eXcursion Setup Dialog Box

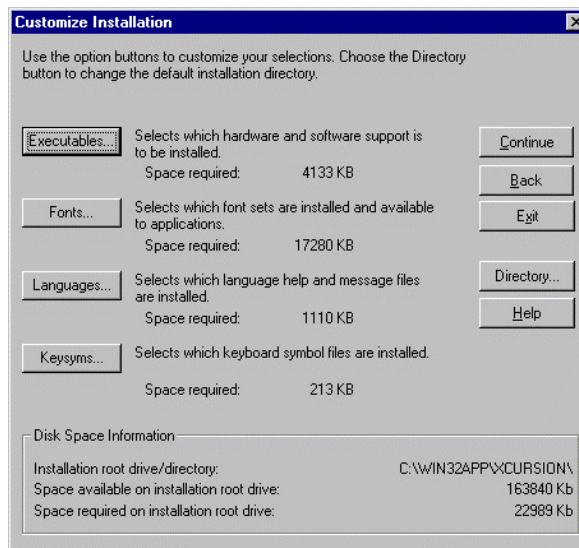


6. Click Continue to return to the Installation Options dialog box.

Installing eXcursion

7. Click the Customized, Shared, or Administrative Installation option. For any of these options, the system displays the Customize Installation dialog box (Figure 4-9 Customize Installation Dialog Box).

Figure 4-9 Customize Installation Dialog Box



8. If you need to correct information you entered, click Back.
9. Customize whichever options are necessary for your installation. When installing eXcursion with the Customized, Shared, or Administrative option, you can customize the procedure to install precisely the executable files, fonts, languages, and keyboard types that you require. Executable files for the supported hardware platforms include:
 - The X Server
 - The Control Panel
 - Associated code libraries

Installing eXcursion

Note

Each dialog box for customizing the executables, fonts, language, or keyboard types contains buttons to:

- **Select All**—Selects all available options on that dialog box.
 - **Reset**—Resets the dialog box settings to the previous state (before you made changes to the dialog box settings).
-

Click any of the customizable options, including:

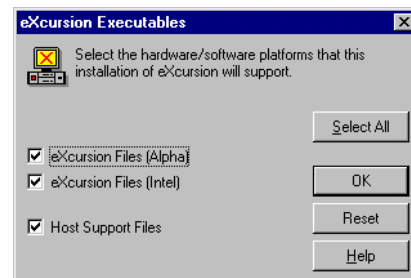
Executables—To specify which hardware and software support you want to install. (see Figure 4-10 eXcursion Executables Dialog Box).

Fonts—To specify the fonts that you want to install (see Figure 4-11 eXcursion Fonts Dialog Box).

Languages—To specify the languages that you want to use with eXcursion (see Figure 4-12 eXcursion Languages Dialog Box).

Keysyms—To specify the keyboard type(s) that you want to use with eXcursion (see Figure 4-13 eXcursion Key Definition Files Dialog Box).

Figure 4-10 eXcursion Executables Dialog Box



Installing eXcursion

Notes

If you are performing an Administrative Installation, all check boxes on the Executables dialog box are available. If you are performing a Custom Installation, the check boxes available depend on the hardware platform.

The Host Support Files check box specifies that host support files are to be copied to the directory into which you are installing. See the Postinstallation section for information on how to install these files on the host.

Figure 4-11 eXcursion Fonts Dialog Box

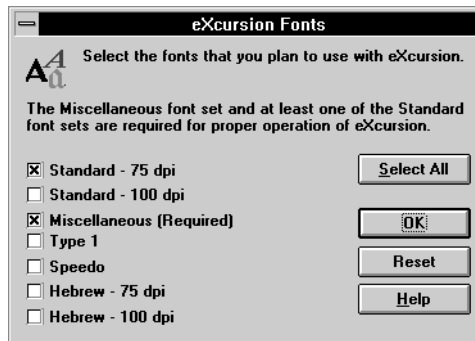


Figure 4-12 eXcursion Languages Dialog Box

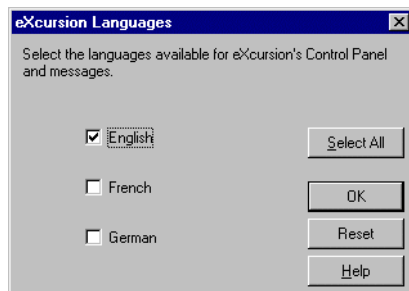
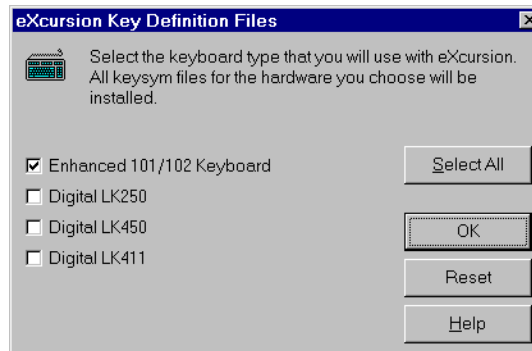


Figure 4-13 eXcursion Key Definition Files Dialog Box



Note

Depending on the installation option you choose and the files available on your distribution media, some of the options shown in the Key Definition Files, Executables, and Fonts dialog boxes may be disabled.

After you have specified the customizations you require, Setup displays the Customize Installation dialog box again.

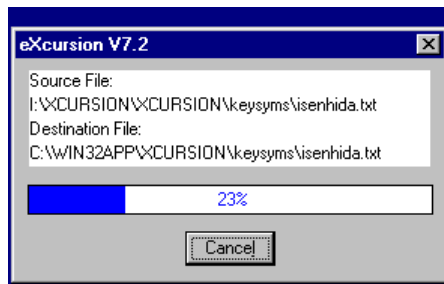
10. If you are satisfied with your customizations, click Continue.

If space is not available for copying the files you specified during your customized installation, Setup displays a dialog box to inform you of the space problem. The dialog box gives the option of returning to the Installation Options dialog box (see Figure 4-6 Installation Options Dialog Box).

Setup then copies eXcursion files into your default directory, or the directory you specified in Step 4. An example is shown in Figure 4-14 eXcursion V7.2 Copying Files Dialog Box.

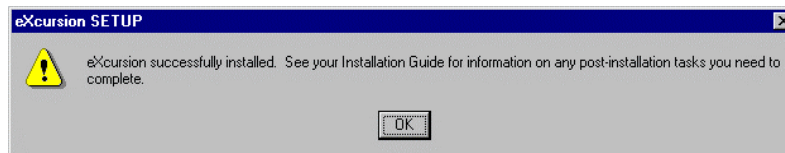
Installing eXcursion

Figure 4-14 eXcursion V7.2 Copying Files Dialog Box



After copying the files, Setup displays the Successful Installation message (see Figure 4-15 Successful Installation Message) to indicate that your installation is successful.

Figure 4-15 Successful Installation Message



Setup does not create icons for the Start menu for Shared or Administrative Installations. If you are going to run eXcursion, you must now install from the network service.

Setup creates icons on the eXcursion program menu for Control Panel, Help, Release Notes, and the eXcursion X Server. If your account has administrator privileges, the program menu is created as accessible to all users of the system (common). Otherwise, the program menu is created as a personal program menu, accessible only by you.

A window showing the eXcursion programs is displayed on your screen. You can copy icons from the window to your desktop for more convenient access. Use the right mouse button to drag an icon from the window to the desktop, then click Create Shortcut Here.

Postinstallation Tasks

1. Ensure that the version of `PCX$SERVER.COM` in `SYS$SYSTEM` that is on your system is the same as the one on the kit. The file is named `PCX_SERV.COM` on the kit. (See the instructions under “Installing on Compaq OpenVMS Hosts” for complete instructions.)

Installing eXcursion

2. If `PCX$SERVER.COM` is not found or is an incorrect version, contact your system manager to install the X Application Startup Program on the host on which X applications are located. (See the instructions under “Installing on Compaq OpenVMS Hosts” for complete instructions.)
3. Read the online eXcursion Release Notes. They contain important information that is not included in the *eXcursion User's Guide* or the online help.
4. If the node name or address for the host is undefined, you may need to define the node name or address for the host where the X application is located so your PC can connect to the host.

If it is necessary to define the host's node name or address, you receive the following message when you try to start an X application.

For DECnet:

```
Nodename is not defined in the local DECnet database.
```

For TCP/IP:

```
Failed to determine IP address for remote system  
nodename.
```

For instructions on defining node names or addresses, see your system administrator or the documentation for your network software.

If you use TCP/IP and have access to a name server, you may want to use the name server. A name server removes the need to define node names in the TCP/IP HOSTS file. You can specify the node name or use the domain name resolver. For instructions, see the documentation for your network software.

5. The number of X applications you can run simultaneously may be limited by the maximum network links provided by your network transport. If you experience a problem with your applications, consult the documentation for your network transport.

Migrating from Windows NT to Windows 2000

If you wish to retain the X application definitions after migrating from Windows NT to Windows 2000 and reinstalling eXcursion, perform the following steps:

1. Save the eXcursion applications' registry entries, by doing the following:
 - a. Run `regedit`.

Installing eXcursion

- b. Select the following registry key:


```
HKEY_CURRENT_USER\Software
\DigitalEquipmentCorporation\eXcursionV7
```
 - c. From the menu, select Registry • Export Registry File.
 - d. Click on the Selected branch radio button in the Export range box.
 - e. Browse to the desired directory and give a file name.
 - f. Click Save.
2. Install Windows 2000 and eXcursion.
 3. Restore the registry entries to the Windows 2000 registry, by doing the following:
 - a. Run regedit.
 - b. From the menu, select Registry • Import Registry File.
 - c. Give the location and name of the file saved in step 1.
 - d. Click Open.
 - e. Click OK when the status message box is displayed.
 4. Recreate the shortcuts in the Start Menu, as desired, by doing the following:
 - a. Open the eXcursion Control Panel.
 - b. Click the Applications tab.
 - c. For each shortcut, select the appropriate entry in the List of Application Aliases and click the Add Icon button.
 - d. Close the eXcursion Control Panel.

Handling Expired OpenVMS Passwords

eXcursion displays a DECterm that lets users supply a new password if their old password has expired, thus allowing them to start X applications from OpenVMS accounts. This facility is not enabled by default, and a short procedure is required to enable it.

To enable checking for expired passwords:

1. On the OpenVMS system, copy the file PCXPWD.EXE to
SYS\$COMMON:[SYSEXE]PCX\$CHKPWDEXP.EXE.

The file PCXPWD.EXE is located in the \HOST\VMS_A (for Alpha) or \HOST\VMS_V (for VAX) subdirectory of your eXcursion directory.

2. Set the file protection to allow world RE access.

Installing eXcursion

3. Install the new version of PCX_SERV.COM (located in the \HOST\VMS_A or \HOST\VMS_V subdirectory of the eXcursion kit tree).
4. Rename the PCX_SERV.COM file to PCX\$SERVER.COM.

During a remote start, PCX\$SERVER.COM searches for the executable file (PCX\$CHKPWDEXP.EXE) required to check for expired passwords. If found, the executable file runs.

If the user's OpenVMS password is expired, an error message is displayed, and a DECterm is started to allow the user to log in and change his or her password.

If the password is not expired, and you have selected the appropriate logging settings in the Control Panel, the following message appears in your SYS\$LOGIN:NETSERVER.LOG file:

PCX\$SERVER_MSG: check for expired password enabled.

This message indicates that the facility for checking passwords is functioning correctly.

Note

You will receive no error message in the log file if PCX\$SERVER.COM searches for the executable file PCX\$CHKPWDEXP.EXE and cannot locate it.

Installing the X Application Startup Program

The X Application Startup Program software is provided with eXcursion. It allows eXcursion users to start X applications in the following ways:

- From the eXcursion Control Panel
- Automatically, whenever eXcursion starts
- From the Applications submenu, displayed from the eXcursion X Server icon on the taskbar
- From icons on the eXcursion V7.2 Applications program menu
- From shortcuts you copy to your desktop

If you are connecting to an OpenVMS system or using DECnet as your network transport, you must install the X Application Startup Program on the host. You do this by copying the X Application Startup Program from

Installing eXcursion

the PC or network drive to the host where X applications are located. In some cases, the required software is already present on the host system.

Note

Only system administrators or users with system privileges can install the X Application Startup Program on a host system.

For platforms other than OpenVMS that support DECnet, a `PCX_SERV.C` file is provided. For information about how to compile the `PCX_SERV.C` file and make it available, see the comments in the header of the `PCX_SERV.C` file (located in the `\XCURSION\HOST\UNIX` subdirectory on the drive from which eXcursion is installed. For example, if you install from a CD-ROM, this would be the drive where the CD-ROM is mounted).

Before You Install

The X Application Startup Program files are located in a subdirectory under `\XCURSION\HOST` on the drive where eXcursion software is installed. This directory is created when you perform a Custom installation, click Executables, and check Host Support Files. Before you try to install the X Application Startup Program, consider the following:

- You must have system privileges on the host to install the X Application Startup Program.
- You need to determine the correct file for your host.
- You may need to give the Startup Program a different file name on the host.
- After copying the appropriate file to the host:
 - You may need to define the object in the volatile and permanent DECnet databases.
 - You must make the file executable.
- Remember that UNIX commands are case sensitive.

For complete instructions on installing the X Application Startup Program and making it available to eXcursion users, refer to one of the following sections for your host and network transport type:

Installing eXcursion

- Installing on Alpha Hosts Running DECnet on Compaq Tru64 UNIX
- Installing on Compaq OpenVMS Hosts

Installing on Alpha Hosts Running DECnet on Compaq Tru64 UNIX

To install the X Application Startup Program:

1. Copy the `PCX_SERV.EXE` file from the directory `host\UNIX_A`, located in the eXcursion kit tree, to the Alpha host from a network drive or PC where eXcursion is installed and name it `pcx_server`.
2. Log on to the Compaq Tru64 UNIX host as root.
3. At the Tru64 UNIX prompt, define the DECnet object in the permanent database by entering:

```
# ncl create session control app pcx
# ncl set session control app pcx image \
name=/usr/bin/pcx_server
# ncl set session control app pcx \
address='{name=PCX$SERVER}'
```

4. Make the X Application Startup Program executable by entering the following:

```
# chmod 755 /usr/bin/pcx_server
```

Installing on Compaq OpenVMS Hosts

To install the X Application Startup Program:

1. From a network drive or PC where eXcursion is installed, copy the `PCX_SERV.COM` file from `\XCURSION\HOST\VMS_V` to `SYS$SYSTEM` on the OpenVMS host and name it `PCX$SERVER.COM`.
2. Make the X Application Startup Program executable by entering the following:

```
$ SET PROTECTION=(S:RWED, O:RWED, G:RWED, W:RE)
_ $ SYS$SYSTEM:PCX$SERVER.COM
```

- If the OpenVMS host uses TCP/IP, you are done.
 - If the OpenVMS host uses DECnet, go to step 3.
3. Log on to the privileged account on the OpenVMS host.

Installing eXcursion

4. Define the new DECnet object in the permanent database by entering the following commands:

```
$ NCP := $NCP  
  
$ NCP DEFINE OBJECT PCX$SERVER FILE  
_ $ SYS$SYSTEM:PCX$SERVER.COM NUMBER 0
```

5. Define the new DECnet object in the volatile database by entering the following:

```
$ NCP SET OBJECT PCX$SERVER FILE  
_ $ SYS$SYSTEM:PCX$SERVER.COM NUMBER 0
```

International Considerations

Regional Language Settings

For proper operation, the Microsoft Windows regional language setting should be set to the same language during all of the following actions:

- Installing eXcursion
- Defining X applications in the eXcursion Control Panel
- Uninstalling eXcursion

If the regional language is different during any two or more of these steps, the following error conditions might occur:

- You might be left with multiple groups of X applications.
- Old settings might not be transferred properly during installation.
- Application groups might fail to be installed or uninstalled.

Hebrew-Specific Information

This section discusses the following:

- Hebrew Features
- General Installation Information

Hebrew Features

To support the Hebrew requirements, eXcursion provides the following features:

- Hebrew fonts (VGA and High resolution)
- Cut and Paste between X Window System and Microsoft Windows/Hebrew supporting Compound strings on X Window System.

Installing eXcursion

(For full support a prerequisite is to have a Hebrew version of Microsoft Windows.)

- Keymap files to support Hebrew characters to be used with KM (Keyboard Manager)

Using eXcursion with the Hebrew X Window System

To use eXcursion with the Hebrew X Window System, perform the following steps:

1. Install the English language version of eXcursion.
2. Select the Hebrew language in the Display page of eXcursion Control Panel.
3. Define the Hebrew keyboard as the secondary keyboard (English as primary) in the keyboard page of eXcursion Control Panel.

Using the Keyboard Manager

If your application controls the keyboard by switching keyboard language, you have to use a remote keyboard manager (KM). To do this, start the **dxkm** application on Tru64 UNIX or the **decw\$km** application on OpenVMS.

Note

The switching mechanism between keyboards of different types (LK250/101-003D=102-enhanced) is not supported.

You can use the Keyboard Manager (KM) from the platform of your choice (OpenVMS or Tru64 UNIX). Note that you only need to run it once and from one platform, even if you start clients on both platforms.

To use KM properly, perform the following steps:

1. Ensure that the Allow Client Keyboard Remapping Requests check box on the Keyboard page of the Control Panel is selected.
2. Copy the *.key files from the directory into which you installed eXcursion (the default location is \Win32app\Xcursion\Keysyms) to the OpenVMS or Tru64 UNIX machine where you will run KM. You have to copy those files in the directory containing the OpenVMS or Tru64 UNIX keymaps files and rename them to change the following information:

Installing eXcursion

- The file extension to `decw$keymap` for OpenVMS or `decw_keymap` for Tru64 UNIX
- The name to a format: language-keyboard

For instance, on OpenVMS, do the following:

- Rename `ISENHDIL.KEY` to `hebrew-isenhd.decw$keymap`
- Rename `ISENHDUS.KEY` to `english-isenhd.decw$keymap`
- Rename `ISENHIL.KEY` to `hebrew-isenhi.decw$keymap`
- Rename `ISENHUS.KEY` to `english-isenhi.decw$keymap`
- Rename `LK250DIL.KEY` to `hebrew-lk250d.decw$keymap`
- Rename `LK250DUS.KEY` to `english-lk250d.decw$keymap`
- Rename `LK250IIL.KEY` to `hebrew-lk250i.decw$keymap`
- Rename `LK250IUS.KEY` to `english-lk250i.decw$keymap`

3. Modify the file `DECW$KM.DAT` (for OpenVMS) or `DXkm` (for Tru64 UNIX) in your login directory to reflect the keyboard you use and the key sequence of your choice for the keymap switching.

For example:

```
!DECW$KM.DAT
km.mode: 0
km.primaryKeyboard: english-lk250d
km.secondaryKeyboard: hebrew-lk250d
km.stickyWindow: TRUE
km.grabKey: Multi_key
km.modifierKey: Control_L
```

This example uses the LK250 keyboard. The `Multi_key` is the Hebrew key, which appears on the Hebrew LK250 keyboard. The `Ctrl/Hebrew` key combination switches the keyboard language.

For an Industry Standard keyboard, the `Multi_key` does not exist. You should define your own key combination for keyboard switching. For example:

```
!DECW$KM.DAT
km.mode: 0
```

Installing eXcursion

```
km.primaryKeyboard:    english-1k250d
km.secondaryKeyboard:  hebrew-1k250d
km.stickyWindow:      FALSE
km.grabKey:           F2
km.modifierKey:       Control_L
```

Note that for Industry Standard, grabKey must be defined explicitly for KM to work properly.

4. You can now start KM from eXcursion as a normal application. You can even set up KM to be started automatically when starting eXcursion.

Important

If you use KM, you should select the U.S. Industry Standard keyboard in the eXcursion keyboard dialog box.

Uninstalling eXcursion

eXcursion includes an uninstaller that works for express or custom eXcursion installations. If you chose a shared or administration installation, you must uninstall manually.

Note

The eXcursion Uninstaller does not remove installations earlier than Version 7.1.

You can remove the installation of eXcursion from your system by choosing Add/Remove Programs from the Start menu, as follows:

Start → Settings → Control Panel → Add/Remove Programs

When the Add/Remove Programs Properties dialog box is displayed, select eXcursionV7 from the drop-down list box, and click the Add/Remove button. When the Uninstall eXcursion confirmation box is displayed, you can click OK to proceed with the removal, or click Help to get more information.

5

Installing PowerTerm 525

This chapter contains information on installing and uninstalling PowerTerm 525 software. The following sections discuss:

- Preparing for installation
- Installing PowerTerm 525
- Uninstalling PowerTerm 525

Preparing for Installation

This section discusses system requirements and preinstallation information. Read this information carefully so that the installation and configuration of the PowerTerm 525 software proceeds smoothly.

PowerTerm 525 requires the following minimum hardware and software configurations:

- An Intel or Alpha system referenced in the Microsoft Hardware Compatibility List (HCL) for your Windows 95, Windows 98, Windows NT, or Windows 2000 system.
- The minimum memory required referenced in the Microsoft HCL or at least 12 MB of RAM for Windows 95 or Windows 98 and 16 MB of RAM for Windows NT or Windows 2000.
- Approximately 15 MB of disk space.
- Windows 95, Windows 98, Windows NT, or Windows 2000 software.

Installing PowerTerm 525

You can install PowerTerm 525 with or without installing Network Connectivity. The PowerTerm installation procedure does not check whether

Installing PowerTerm 525

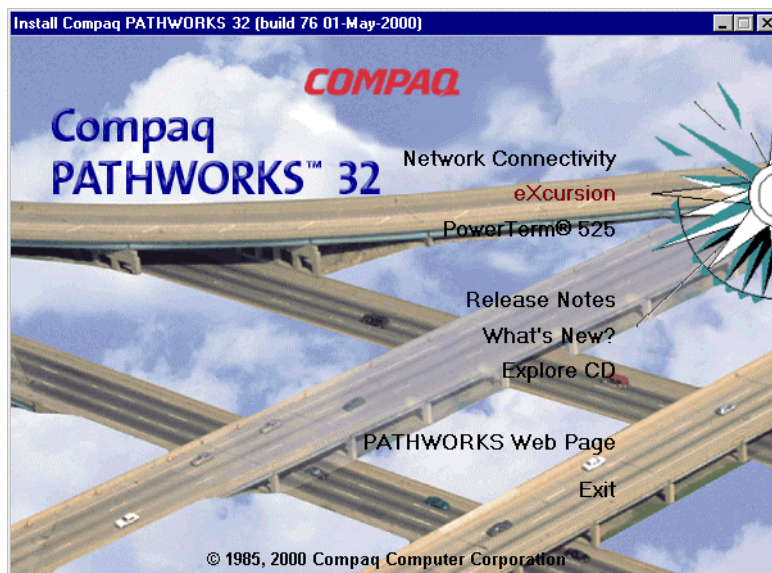
the PATHWORKS 32 components have been installed. However, if CTERM and LAT are to be used, you must also install certain Network Connectivity components, either before or after installing PowerTerm. For example, to install CTERM and LAT support, choose the Custom Install option for Network Connectivity, and select DECnet and LAT, when prompted. Note that if you choose to install PowerTerm without Network Connectivity, you also get TELNET support.

Follow these steps to install PowerTerm 525:

1. Insert the PATHWORKS 32 CD-ROM into the system's CD-ROM drive.

If you are installing from a network kit, instead of CD-ROM media, run or double-click on AUTOPLAY.EXE in the kit top-level directory.

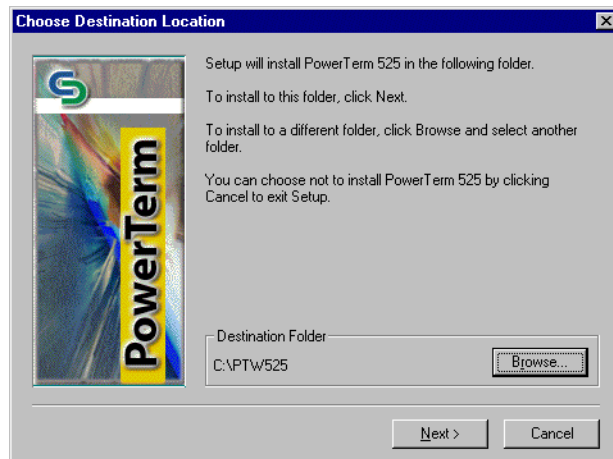
The Install Compaq PATHWORKS 32 splash screen is displayed, as follows:



If the Compaq PATHWORKS 32 splash screen does not appear, you do not have AUTOPLAY enabled for your CD-ROM drive; in this case, you can start Windows Explorer and click AUTOPLAY.EXE in the CD-ROM's top-level directory.

2. Click the PowerTerm 525 option to start the installation.

The PowerTerm 525 splash screen is displayed followed by the Installation Directory dialog box.



3. Enter the directory into which you want to install PowerTerm and click Next.

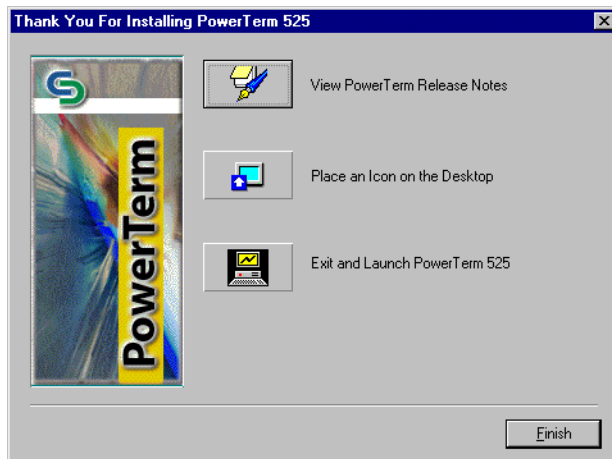
Note

If you cancel the installation while the files are being copied, the PowerTerm Setup program displays a message asking you to confirm the cancellation.

However, the Setup program does not perform any cleanup. You must do it manually. Because the installation usually takes less than one minute, it might be safer to wait for it to finish. Then, use Uninstall to remove the installed files.

The Copying Files window is displayed. When PowerTerm has been installed, the Thank You For Installing PowerTerm 525 window is displayed.

Installing PowerTerm 525



4. Click Finish to complete the PowerTerm 525 installation.

Uninstalling PowerTerm 525

Follow these steps to remove the installation of PowerTerm 525 from your system:

1. Click the Uninstall PowerTerm option from the Start menu:

Start • Programs • PATHWORKS PowerTerm 525 • Uninstall PowerTerm

You are prompted to remove any files that are not PowerTerm files found in the PowerTerm directory.

Note

The Uninstall PowerTerm option does not delete the hidden .GID files created by Windows Help; you must remove those manually.

2. Remove any non-PowerTerm files.
You will be prompted to remove PowerTerm program files in which shortcuts were created.
3. Remove the PowerTerm program files.