

TLViz File Formats

1 September 2012

T4@hp.com

Overview

- TLViz
 - Primarily a visualizer for T4 data
 - Recognizes two(2) file formats
 - Format One(1) [supported, but deprecated]
 - Format Two(2)
 - provides better support of large datasets
 - Both formats are basically ‘CSV’ files
 - Have a specified structure

Format One(1) Schematic

Line One(1)	HEADER LINE
Line Two(2)	STARTING DATE(DD-MMM-YYYY)
Line Three(3)	STARTING TIME(HH:MM[24 hour clock])
Line Four(4)	DATA HEADERS
Lines Five(5)+	DETAIL LINES(Minimum of Two(2))

Minimal Example....

XYZZY,

26-JAN-2007,

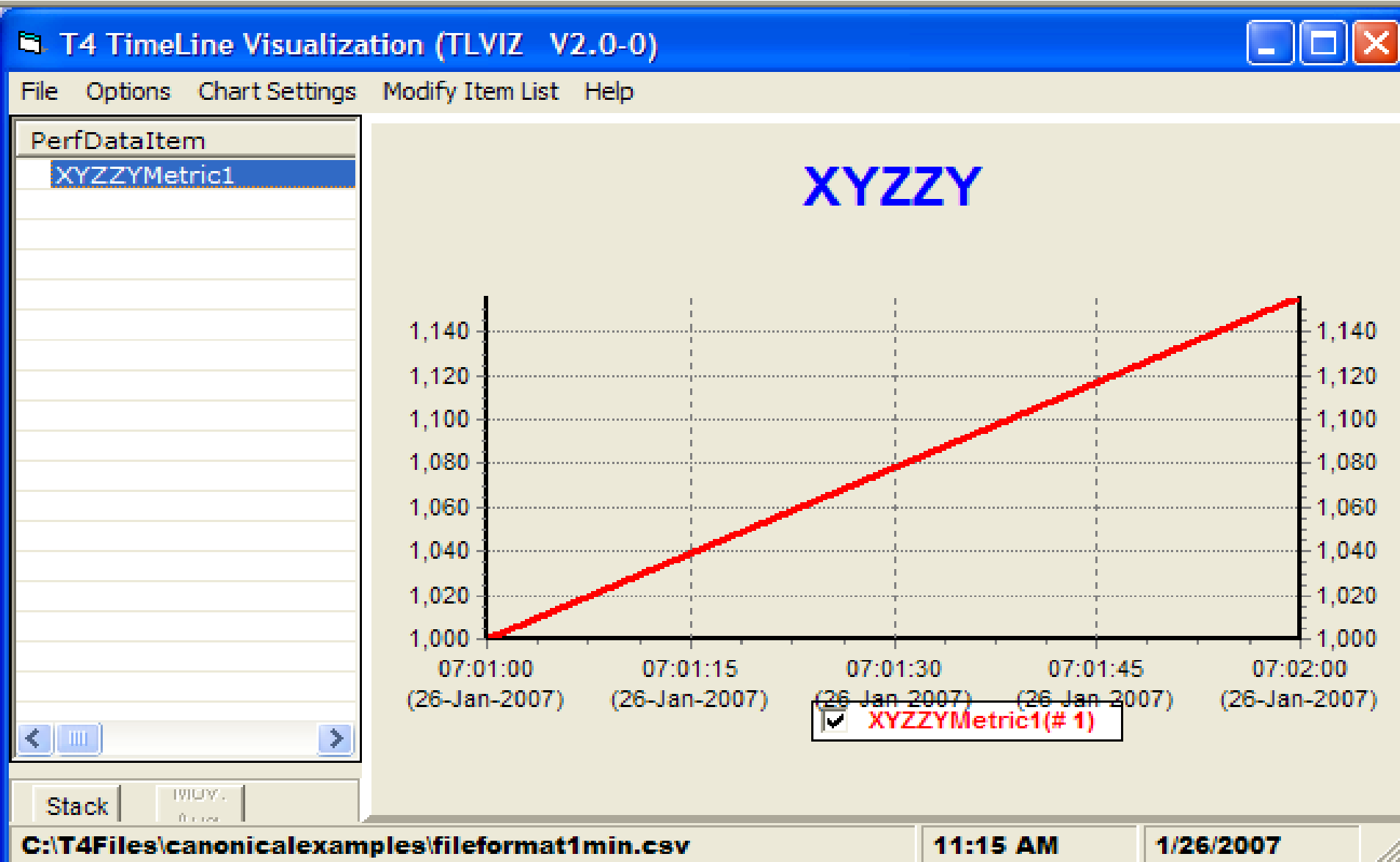
07:00,

Sample Time,XYZZYMetric1

26-JAN-2007 07:01:00.10,1000

26-JAN-2007 07:02:00.10,1156

....Results in...



Format One(1) Details

XYZZY,

26-JAN-2007,

07:00,

Sample Time,XYZZYMetric1

26-JAN-2007 07:01:00.10,1000

26-JAN-2007 07:02:00.10,1156

Commas REQUIRED

Comma separated values

Minimal Example....

XYZZY,
26-JAN-2007,
07:00,

The string, 'Sample Time' must at least be a substring within the name for the first header.

Sample Time XYZZYMetric1
26-JAN-2007 07:01:00.10,1000
26-JAN-2007 07:02:00.10,1156

Minimal Example....

XYZZY,
26-JAN-2007,
07:00,

The sample time format must be
'DD-MMM-YYYY HH:MM:SS.cc',
and utilize a 24 hour clock.

Sample Time, XYZZYMetric1

26-JAN-2007 07:01:00.10, 1000

26-JAN-2007 07:02:00.10, 1156

Minimal Example....

XYZZY,
26-JAN-2007,
07:00,

The number of headers must match the number of values on a detail line

Sample Time, XYZZYMetric1

Two(2) Headers

26-JAN-2007 07:01:00.10, 1000

Two(2) values per detail line

26-JAN-2007 07:02:00.10, 1156

Detail Line Contents

- Comma separated
- Numeric
 - Real values(e.g. 12.50,1.00)

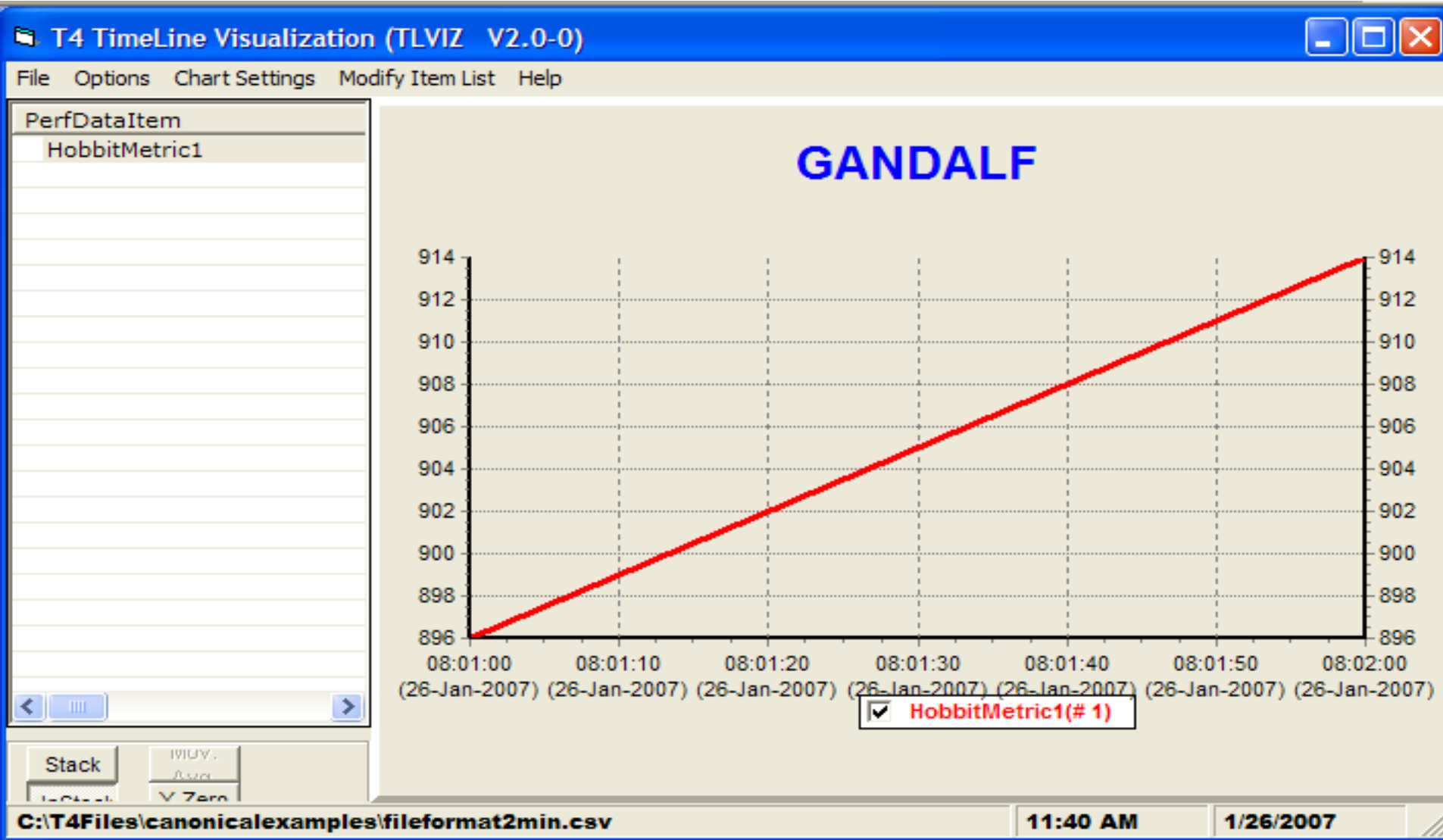
Format Two(2) Schematic

Line One(1)	HEADER LINE
Line Two(2)	STARTING DATE(DD-MMM-YYYY)
Line Three(3)	STARTING TIME(HH:MM:SS:cc [24 hour clock])
Line Four(4)	\$\$\$ START COLUMN HEADERS \$\$\$
Lines Five(5)+	DATA HEADER LINE(S)
Lines Six(6)+	\$\$\$ END COLUMN HEADERS \$\$\$
Lines Seven(7)+	DETAIL LINES(Minimum of Two(2))

Minimal Example....


```
GANDALF,  
26-JAN-2007,  
08:00,  
$$$ START COLUMN HEADERS $$$  
Sample Time  
HobbitMetric1  
$$$ END COLUMN HEADERS $$$  
26-JAN-2007 08:01:00.10,896  
26-JAN-2007 08:02:00.10,914
```

....Results in...



Minimal Example....

```
GANDALF,  
26-JAN-2007,  
08:00,  
$$$ START COLUMN HEADERS $$$
```



Commas REQUIRED

Comma separated values



```
HobbitMetric1  
$$$ END COLUMN HEADERS $$$  
26-JAN-2007 08:01:00.10,896  
26-JAN-2007 08:02:00.10,914
```

Minimal Example....

Markers for the beginning and end of Header values



GANDALF,
26-JAN-2007,
08:00,

\$\$\$ START COLUMN HEADERS \$\$\$

Sample Time
HobbitMetric1

\$\$\$ END COLUMN HEADERS \$\$\$

26-JAN-2007 08:01:00.10,896

26-JAN-2007 08:02:00.10,914

Minimal Example....

```
GANDALF,  
26-JAN-2007,  
08:00,  
$$$ STAFF HEADERS $$$  
Sample Time  
HobbitMetric1  
$$$ END COLUMN HEADERS  
26-JAN-2007 08:01:00.10,896  
26-JAN-2007 08:02:00.10,914
```

The number of headers must match the number of values on a detail line

Two(2) Headers

Two(2) values per detail line

Detail Line Contents

- Comma separated
- Numeric
 - Real values(e.g. 12.50,1.00)

Best Practices

- Have regular time samples
 - Sample every n time units
- TLViz time scale
 - Highest resolution is one(1) second

Resources

- T4@hp.com
- <http://h71000.www7.hp.com/openvms/products/t4/index.html>