

Providing a powerful foundation for your e-business transformation



IBM OS/2 Warp Server for e-business

Highlights

Builds on the proven strengths of OS/2 Warp Server Version 4, IBM's mission-critical platform for Intel-based servers

Has the flexibility to handle escalating network computing needs

Allows you to leverage your current assets while simplifying your transition to e-business and Web-based solutions

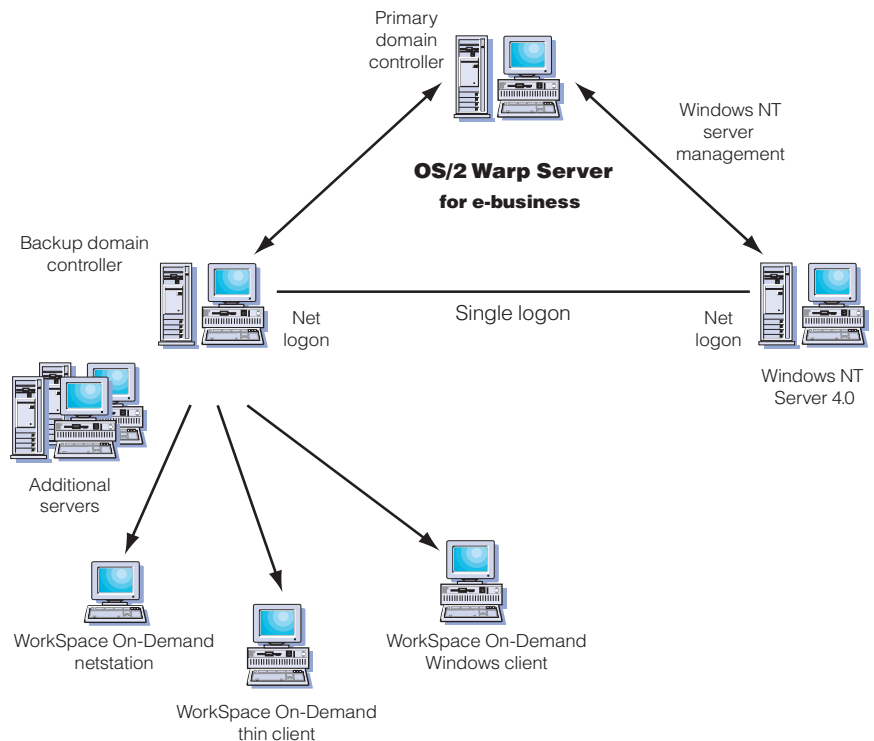
Helps simplify network administration as your business needs change

Delivers exceptional scalability for demanding e-business requirements

Is Year 2000-ready¹ and euro currency-ready²

As your company transforms into a fully functional e-business, you will need a powerful foundation to meet rigorous server performance and availability requirements. Whether you're simply adding a new server to your existing network or just stepping into the world of e-business, IBM® OS/2® Warp Server for e-business offers features you're looking for from an advanced application server

platform. Designed for fast performance, exceptional scalability and outstanding Web and Lotus Notes® server capabilities, OS/2 Warp Server for e-business is a network operating system suitable for individual departments, small and medium-sized businesses, and large corporations and institutions.



OS/2 Warp Server for e-business—your single point of control



e-business

Lets you grow your server with your business

This Intel®-based server supports OS/2, Java™ and existing OS/2 applications while it simplifies administration of Windows NT® platforms, helping preserve your existing investments. Plus, it's an optimal platform for WorkSpace On-Demand—IBM's proven product for low cost of ownership and fast deployment of new applications that facilitate the transition to network computing.

To help assure that your mission-critical applications and systems are ready for the 21st century, OS/2 Warp Server for e-business has been designed to be Year 2000-ready and euro currency-ready.

JFS and LVM help meet e-business needs

OS/2 Warp Server for e-business has a journaled file system (JFS) and a logical volume manager (LVM) to help you meet the increased speed, size and availability needs of an e-business. Designed for the high-throughput and reliability require-

ments of corporate servers, JFS provides quick recovery times, essential to improving server availability. The LVM helps administrators balance dynamic file requirements, allowing JFS partitions to be dynamically expanded, and volumes to span physical disks. JFS and LVM are compatible with existing applications that use FAT, HPFS and 386 HPFS³. They work together to provide:

- Outstanding scalability on symmetrical multiprocessor (SMP) systems
- Quick file restore times
- Large file and partition sizes
- Sticky and dynamic drive letter assignments for enhanced support of removable media

Management for Windows NT servers, users and groups

OS/2 Warp Server for e-business can manage Microsoft® Windows NT server resources, as well as user and group account information. By using a synchronized account database, dual maintenance of user accounts in multiple network domains is no longer necessary. The Windows NT server is defined as an additional server in the domain to keep all domain account updates synchronized, simplifying network administration.

A powerful combination of integrated services

OS/2 Warp Server for e-business includes IBM WebSphere™ Application Server 1.1 and Domino Go Webserver™. This powerful combination delivers integrated services to help organizations move beyond the former limitations of Common Gateway Interface (CGI) and PERL scripts. WebSphere Application Server 1.1 provides:

- A servlet runtime engine
- High-performance database connectors
- Application services for session and state management

Protects your current investments

The use of IBM WebSphere Application Server with OS/2 Warp Server for e-business provides a foundation for deploying Web applications using the Java servlet programming model. The servlets can exploit the beneficial capabilities of Java technology, including security, platform independence and reusability. This technology gives your business a way to design and develop server-side e-business applications using a common programming model to place business logic in the best place for each application.

Java and LDAP toolkits enable better performance

Java and LDAP toolkits provided with OS/2 Warp Server for e-business help improve your responsiveness to future business needs, and assist in retrofitting your old programs for universal access. IBM OS/2 Warp Developer's Kit, Java Edition, Version 1.1.7 (runtime and toolkit) combines high capacity, high performance, Web serving, Java serving and traditional network file and print serving—all on a single platform. OS/2 Warp Server

for e-business also includes IBM OS/2 LDAP Client Toolkit for C and Java Version 1.0, which is intended for programmers who want to enable new or existing applications to access, search and update LDAP servers using LDAP Version 2 or 3 protocols. This toolkit supplies libraries, files, documentation and samples needed to develop C or Java directory-enabled applications that can access a variety of LDAP-based directory servers.

Tivoli LCF and IBM Netfinity improve efficiency, management

OS/2 Warp Server for e-business includes the Tivoli® Lightweight Client Framework (LCF) Endpoint Agent for OS/2, which delivers high functionality while still keeping costs low for customers with remote branches. LCF in the Tivoli framework increases the number of resources that a Tivoli management environment can deal with at one time, helping improve efficiency. Tivoli LCF supports OS/2 as an endpoint for TCP/IP.

To give network administrators the capabilities they need to initiate and manage services for LAN-connected clients and servers, Netfinity® 5.2 is included with OS/2 Warp Server for e-business. IBM Netfinity for OS/2 is a solution for managing departmental clients and servers.

DDNS and DHCP enable dynamic IP address changes

By using Dynamic Domain Name Server (DDNS) for Windows® 95 and Windows NT clients, administrators are freed from the task of keeping up with special addresses for their Windows 95 and Windows NT clients. With DDNS, users only have to remember their host name—no matter how much they move around the network. Dynamic Host Configuration Protocol (DHCP) allows a user to change locations within a network, then dynamically get an IP address that works for that new location. The DDNS client dynamically changes the host name-to-IP address mappings and provides additional security beyond the DDNS Proxy.

With the added security of these DDNS network clients, administrators can enjoy the same DDNS support they rely on to manage OS/2 Warp, WorkSpace On-Demand and AIX® clients.

Simplifies network management

OS/2 Warp Server for e-business at a glance

Hardware Requirements

- Intel Pentium®-compatible or higher, processor-based personal computer⁴
 - 32MB of random access memory (RAM)⁵
 - 250MB of free hard disk space⁵
 - 1.44MB, 3.5 diskette drive
 - VGA video support
 - IBM-compatible mouse
 - Supported CD-ROM drive
 - Supported LAN adapter card⁶
-

NFS enables shared data

If your business data can be shared horizontally across the enterprise, its value can be greatly increased. OS/2 Warp Server for e-business provides a network file system (NFS) which allows AIX or UNIX® drives to become sharable resources for OS/2 Warp Server for e-business clients. This helps make information management more cost-effective and enables sharing of intellectual property—within departments, across the company or outside the company.

TCP/IP enhancements

The TCP/IP stack for OS/2 Warp Server for e-business supports up to 64K concurrent sockets, allowing customers to support large TCP/IP-based application servers. Performance of processor utilization and data transfer latency has been significantly improved in this version of the server—helping improve application response and data-transfer times.

For more information

To learn more about OS/2 Warp Server for e-business, contact your local IBM representative or authorized IBM dealer. You may also visit:

www.ibm.com/software/warp-server

Future updates for certain features contained in the package for OS/2 Warp Server for e-business may be available at:

www.ibm.com/software/os/warp/swchoice

OS/2 Warp Server for e-business features and benefits

Feature	Benefit
Support for a broad range of industry clients	<ul style="list-style-type: none">• Allows flexibility in client platform choice (OS/2 Warp 4, WorkSpace On-Demand 2.0, Windows 95, Windows 98, Windows NT 4.0, Windows 3.1 and DOS)• Helps preserve current investments in hardware and software
Windows NT seamless integration; access to file and print services of Windows NT	<ul style="list-style-type: none">• Can help reduce administration time• Helps leverage current assets
Support for many leading file systems	<ul style="list-style-type: none">• Lets you choose the file system that fits your needs today• Is scalable, to help leverage your investments tomorrow
JFS combined with LVM	<ul style="list-style-type: none">• Can reduce downtime• Gives flexibility in data storage and management• Provides scalability, availability and performance• Files and partitions up to 2TB in size• Permits logical drives to span multiple, physical hard drives• Expands partitions without reformatting
Local and remote systems management	<ul style="list-style-type: none">• Simplifies inventory of networked client hardware and software• Makes it easy to schedule routine jobs, distribute files and remotely control clients• Extends client/server hierarchies and enhances scalability of Tivoli management environments• Increases the number of resources that can be managed, helping improve efficiency• Enables administrators to initiate and manage services for LAN-connected clients and servers
e-business execution environment	<ul style="list-style-type: none">• Builds a solid foundation for e-business transformation• Provides high-performance, high-capacity Web serving, Java serving and traditional network file and print serving on a single platform
Premier platform for server-managed clients	<ul style="list-style-type: none">• Leverages current infrastructure while allowing transition to server-managed computing• Helps address total cost of ownership issues• Can help make new service deployment faster and more efficient



© International Business Machines Corporation 1999

IBM Corporation
11400 Burnet Road
Austin, TX 78758

Produced in the United States of America
4-99

All Rights Reserved

AIX, the e-business logo, IBM, Netfinity, OS/2 and WebSphere are trademarks of International Business Machines Corporation in the United States, other countries or both.

Lotus Notes and Domino Go Webserver are trademarks of Lotus Development Corporation in the United States, other countries or both.

Tivoli is a trademark of Tivoli Systems Inc. in the United States, other countries or both.

Intel and Pentium are trademarks of Intel Corporation in the United States, other countries or both.

Microsoft, Windows and Windows NT are trademarks of Microsoft Corporation in the United States, other countries or both.

Java and all Java-based trademarks and logos are trademarks of Sun Microsystems, Inc. in the United States, other countries or both.

UNIX is a registered trademark in the United States, other countries or both and is licensed exclusively through X/OPEN Company Limited.

Other company, product and service names may be trademarks or service marks of others.

¹ Year 2000 ready means that the IBM product, when used in accordance with IBM-associated documentation, is capable of correctly processing, providing and/or receiving the date data within and between the twentieth and twenty-first centuries, provided that all products (for example, hardware, software and firmware) used with the IBM product properly exchange accurate date data with it.

² EuroReady means that the IBM product, when used in accordance with IBM-associated documentation, is capable of correctly processing monetary data in the euro denomination and of respecting the euro currency formatting conventions (including the euro sign), provided that all other products (for example, hardware, software and firmware) used with the IBM product are also EuroReady.

³ 386 HPFS is available as a separate feature.

⁴ Symmetrical multiprocessor-based systems should comply with the Intel Multiprocessor Specification, Version 1.1 or 1.4.

⁵ Additional memory and either more or less hard disk space may be required, based on user installation selections, applications and data.

⁶ For the list of supported adapters, visit the OS/2 Device Driver Pak online at:
service.software.ibm.com/os2ddpak



Printed in the United States on recycled paper containing 10% recovered post-consumer fiber.



G325-3895-00