

DIGITAL AlphaServer 1200
Illustrated Parts Breakdown

Order Number: EK-AS120-IP. B01

Digital Equipment Corporation
Maynard, Massachusetts

Digital Equipment Corporation reserves the right, without notice, to make substitutions and modifications in the specifications of products documented in this manual and further reserves the right to withdraw any of these products from the market without notice.

Digital Equipment Corporation is not responsible for errors which may appear in the technical description (including illustrations and photographs) of the products covered by this manual.

None of the descriptions contained in this manual imply the granting of any license whatsoever to make, use or sell equipment constructed in accordance therewith.

Restricted Rights: Use, duplication or disclosure by the U.S. Government is subject to restrictions as set forth in subparagraph (c) (1) (ii) of the Rights in Technical Data and Computer Software clause at DFARS 252.227-2713.

Copyright © 1997, 1998 by Digital Equipment Corporation. All rights reserved.
Printed in U.S.A.

The following are trademarks of Digital Equipment Corporation :
Alpha, AlphaServer, DIGITAL, Open VMS, StorageWorks, ThinWire and the DIGITAL logo.

The following are third party trademarks:
IBM is a registered trademark of International Business Machines, Inc.
Microsoft and Windows NT are registered trademarks of Microsoft Corporation.
UNIX is a registered trademark in the United States and other countries, licensed exclusively through X/Open Company Ltd.

Reader's Comments

DIGITAL welcomes your comments on this manual.
You can send your comments to DIGITAL at the address below:

Digital Equipment Corporation
Servers Engineering and Technical Services
129 Parker Street
PKO3- 1/20C
Maynard, MA 01754-2199

Please reference EK-AS120-IP. B01 in your correspondence.

ILLUSTRATED PARTS BREAKDOWN

DIGITAL AlphaServer 1200

ILLUSTRATED PARTS BREAKDOWN (IPB)

The IPB is used to identify a part and its location in a hardware product. The document references specific item numbers in the associated parts list.

HOW TO USE THE IPB

1. Locate the figure containing the item of interest.
2. Locate the number (callout) of the item of interest.
3. Locate that item number in the associated parts list.

FORMAT

Each IPB is generally organized based on its first figure. All other assemblies and subassemblies are referenced from this figure. Each figure contains numeric callouts of all major parts (items).

PARTS LIST

Each parts list contains the following:

Figure and Item No. - Lists the figure number and its referenced numeric callout

Description - Presents the name and a brief description of the item. A single asterisk (*) preceding the description denotes item is a

subassembly to its referenced figure. A double asterisk (**) preceding the description indicates that this item is subordinate to the preceding single asterisk item.

DIGITAL Part No. - Lists the DIGITAL/Vendor part number. The letter in the column heading indicates the current revision level of the Engineering Drawing for the referenced figure.

ECO Cut-In - Lists the top assembly drawing number and revision level at first printing. All additional revisions to an item are listed in this column.

Used On Code - Lists letters referring to the product variation assigned in Figure 1. When this column is blank, the item is used in all variations.

Ref Fig No. - Lists a cross reference between figures within the IPB.

PART NUMBER/PART DESCRIPTION INDEX SECTION

Lists items by part number numerically, and description alphabetically. Items are also referenced to a location within the IPB by figure and item number.

ECO/REVISION HISTORY					OTHER IPB MANUALS REFERENCED
FIGURE NO.	ASSEMBLY	INITIAL LEVEL	CURRENT LEVEL	PRINTING DATE	
1	54HHA	00001	00001	AUG 1998	N/A
1	54KHA	00001	00001		
2	54ZHA	00001	00004		
3	30-41899	00008	00009		

INDICATES FRU LEVEL PARTS.

PARTS LIST

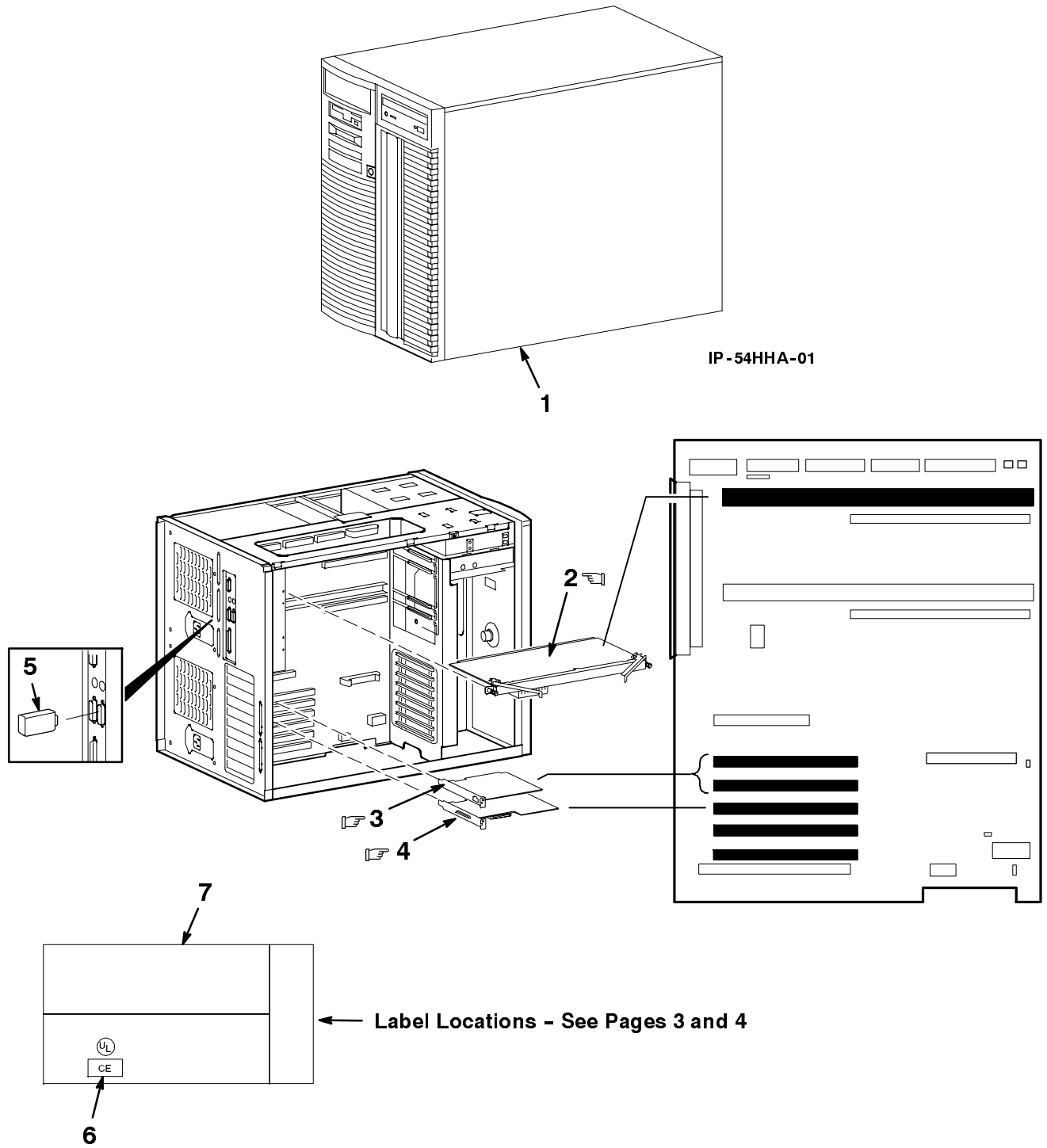


Figure 1. Kernel Assemblies

IP-54HHA-02

FIG. & ITEM NO.	DESCRIPTION	DIGITAL PART NO. ^B	ECO CUT-IN 00001	USED ON CODE	REF FIG NO.
1-	KERNEL ASSEMBLIES				
A	AlphaServer 1200 5/400 KERNEL ASSEMBLY	54HHA-AA		A	
B	AlphaServer 1200 5/400 KERNEL ASSEMBLY	54HHA-AB		B	
C	AlphaServer 1200 5/533 KERNEL ASSEMBLY	54KHA-AA		C	
D	AlphaServer 1200 5/533 KERNEL ASSEMBLY	54KHA-AB		D	
1	*AlphaServer 1200 w/o CPU/Memory or I/O	54ZHA-AA			2
☞ 2	*Module, CPU EV5.6 4MB (400 MHz)	B3007-AA		AB	
☞	*Module, CPU EV5.6 4MB (533 MHz)	B3007-CA		CD	
☞ 3	*Card, PCI 10/100 Fast Ethernet	DE500-AA		AC	
☞ 4	*Controller, SCSI, FWSE, 1 Port, PCI	KZPBA-CA		AC	
5	*Adapter, DECstation 2000, 9-Pin Serial	H8571-J			
6	*Label, CE Mark (See Page 4)	36-36842-01			
7	*Label, Composite Set, Blank (See Pages 3 & 4)	36-43278-01			
8	*Label, C-Tick Mark (See Page 4)	36-48270-01			
9	*Package Assembly (Not Shown)	37-01507-01			

☞ ☞ INDICATES FRU LEVEL PARTS.

PARTS LIST

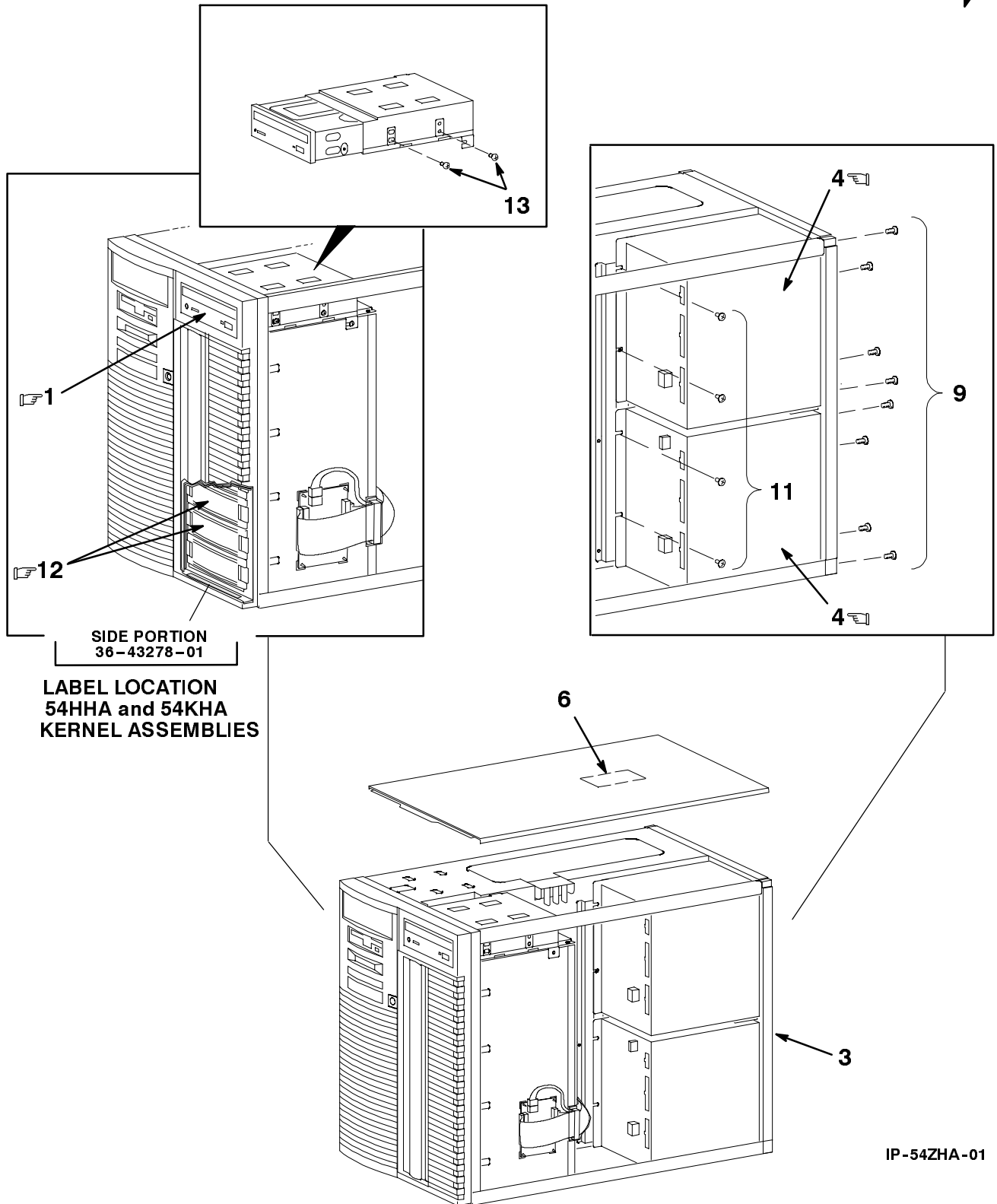
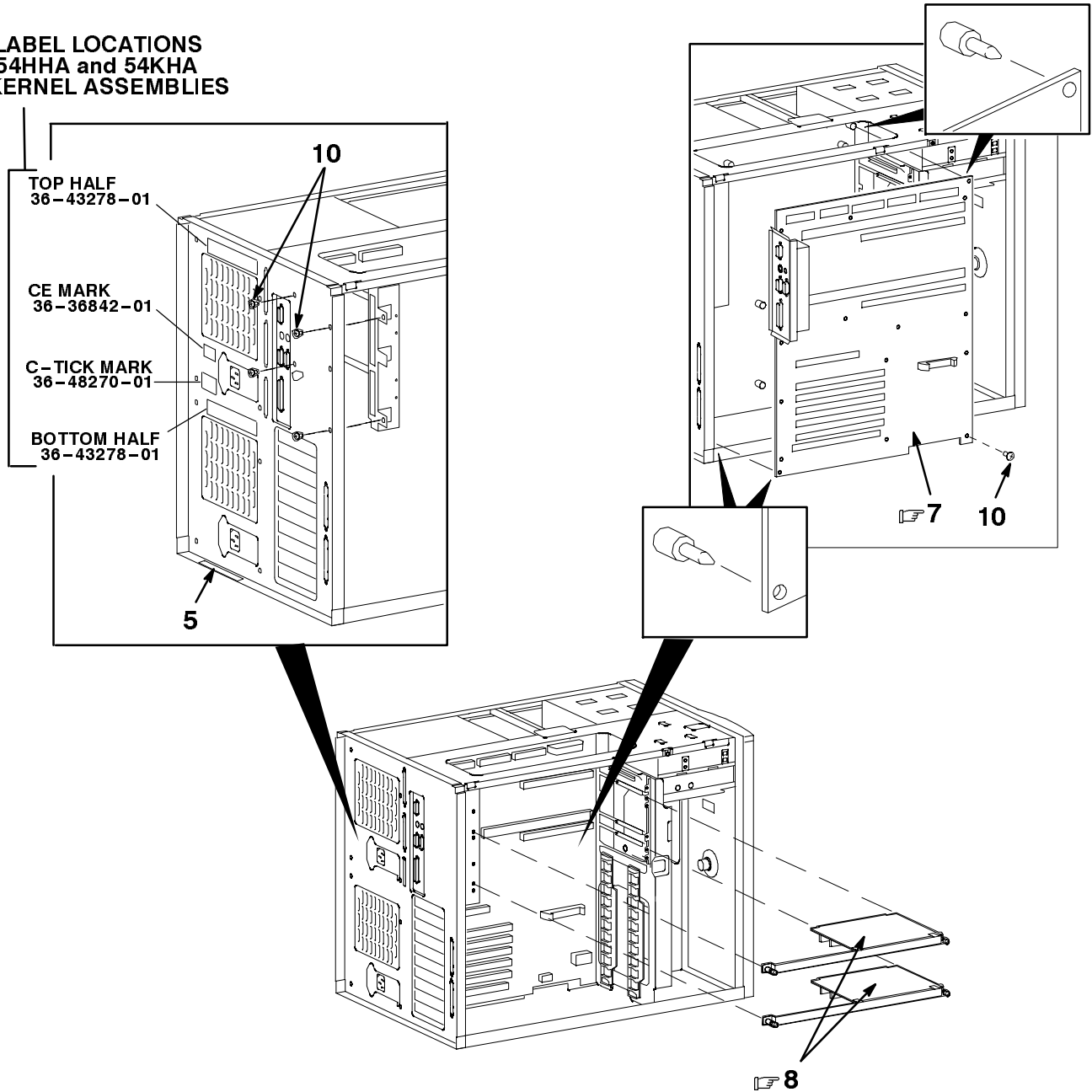


Figure 2. AlphaServer 1200 w/o CPU/Memory or I/O (Sheet 1 of 3)

☞ ☞ INDICATES FRU LEVEL PARTS.

PARTS LIST

**LABEL LOCATIONS
54HHA and 54KHA
KERNEL ASSEMBLIES**

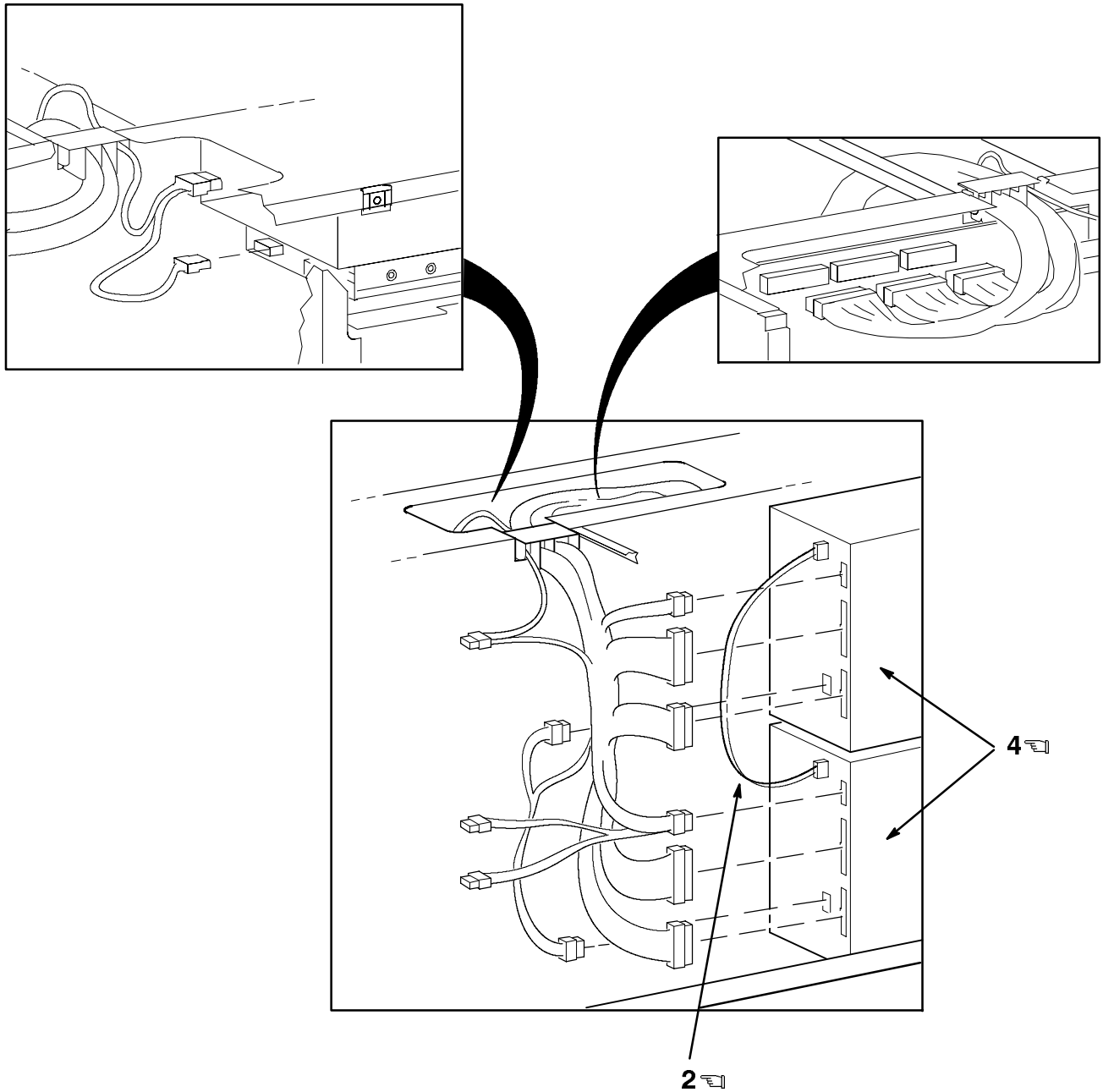


IP-54ZHA-02

Figure 2. AlphaServer 1200 w/o CPU/Memory or I/O (Sheet 2 of 3)

☞ ☞ INDICATES FRU LEVEL PARTS.

PARTS LIST



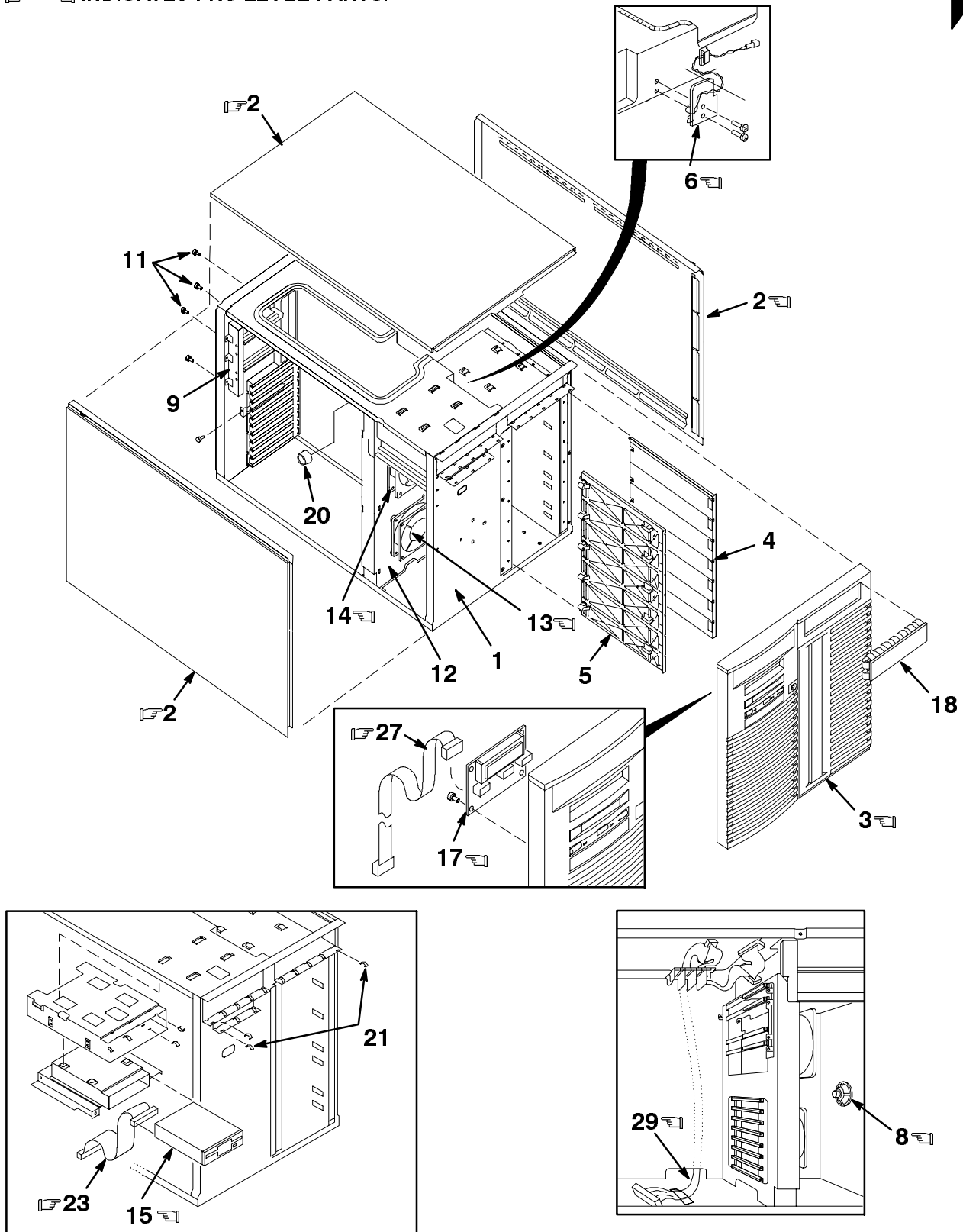
IP-54ZHA-03

Figure 2. AlphaServer 1200 w/o CPU/Memory or I/O (Sheet 3 of 3)

FIG. & ITEM NO.	DESCRIPTION	DIGITAL PART NO. ^E	ECO CUT-IN 54ZHA 00001	USED ON CODE	REF FIG NO.
2-	AlphaServer 1200 w/o CPU/Memory or I/O	54ZHA-AA			
☞ 1	*CD-ROM (12X) SCSI 600MB TG Blue (added)	RRD46-AC	00004		
☞	*CD-ROM (12X) SCSI White (deleted)	RRD46-AB	00004		
☞ 2	*Cable, Power Supply Current Sharing (3-Pin)	17-04195-01			
3	*ENCLOSURE, SYSTEM BOX	30-41899-03			3
☞ 4	*Power Supply, 450W	30-43120-02			
5	*Label, Nameplates, Decals	36-37522-10			
6	*Label, Customer Installation	36-43629-03			
☞ 7	*Module, Main Logic Board (MLB) (added)	54-25147-02	00002		
☞	*Module, Main Logic Board (MLB) (deleted) (See Note)	54-25147-01	00002		
8	*Module, Riser Card	54-25149-01			
9	*Screw, Sems Pan Hd 6-32 x .25	90-00049-01			
10	*Screw, Pan Hd M3 x 6mm	90-09984-20			
11	*Screw, Sems Pan Hd M3.5 x 8 mm	90-09984-29			
☞ 12	*Bezel, Blank	74-45644-03			
13	*Screw, Pan Hd M3 x 4 mm	90-10961-01			
	<p>Note: 54-25147-01 (Min Rev C03) is an acceptable substitute for 54-25147-02 Rev D.</p>				

INDICATES FRU LEVEL PARTS.

PARTS LIST

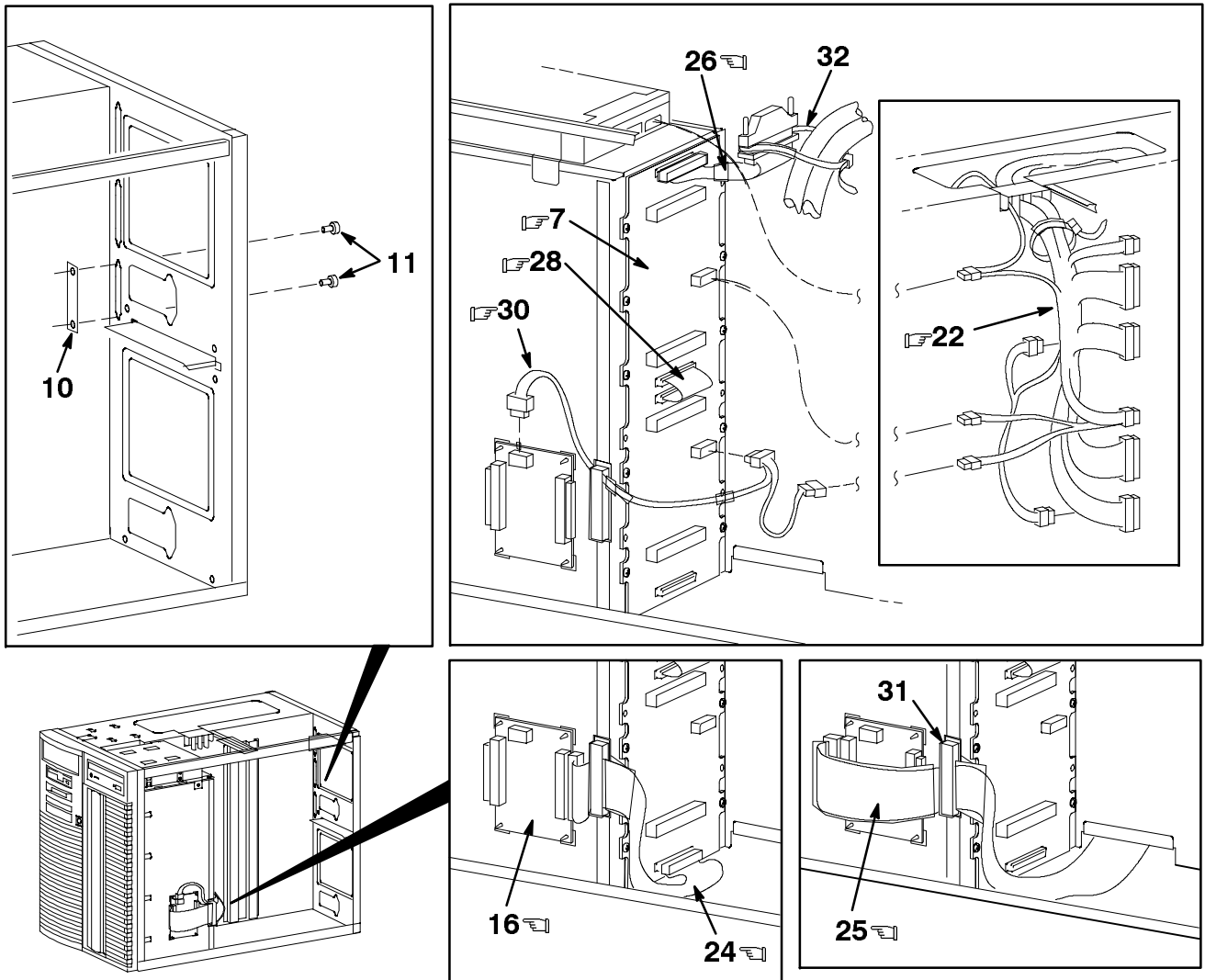


IP-3041899-01

Figure 3. System Box Enclosure Assembly (Sheet 1 of 4)

☞ ☞ INDICATES FRU LEVEL PARTS.

PARTS LIST

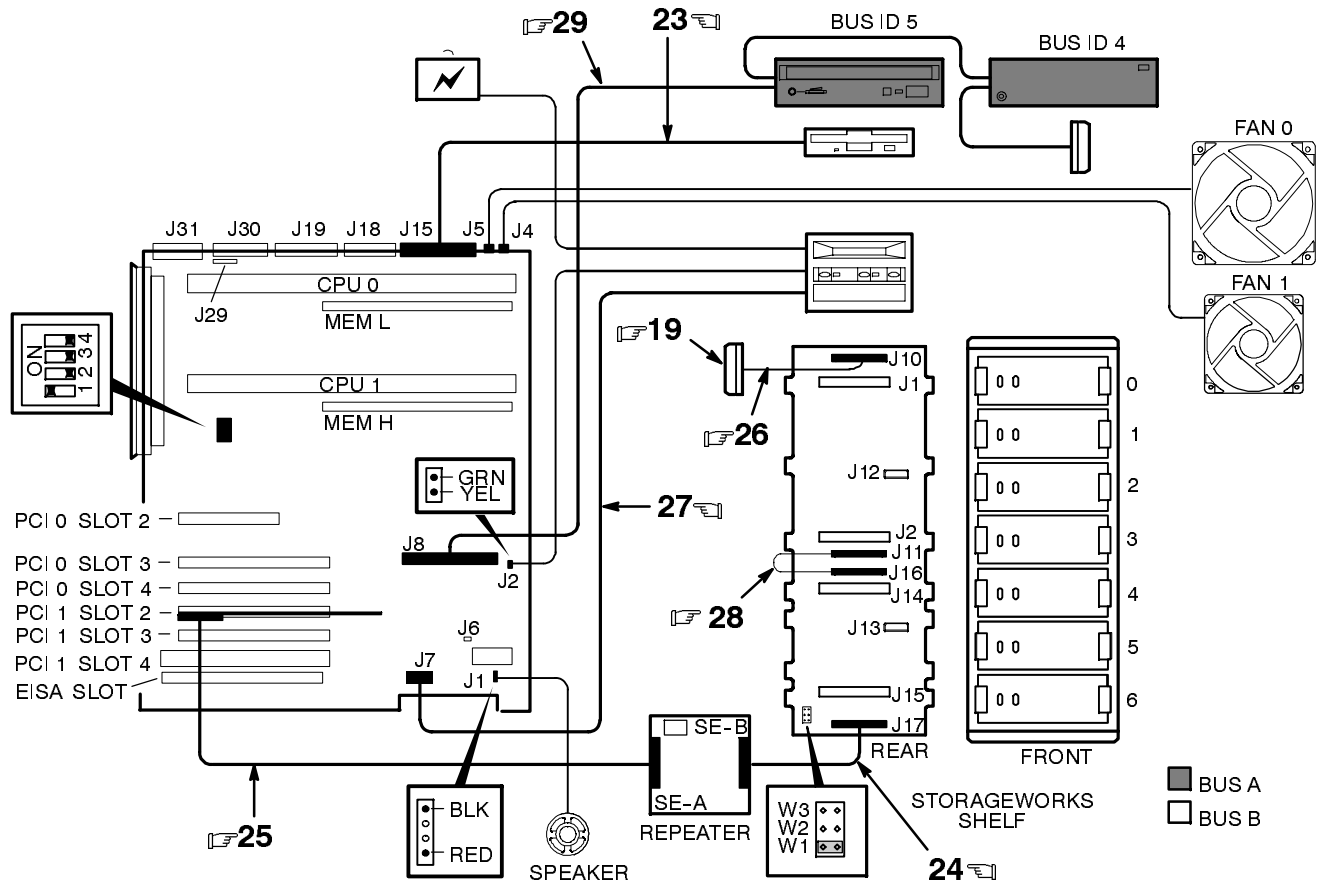


IP-3041899-02

Figure 3. System Box Enclosure Assembly (Sheet 2 of 4)

INDICATES FRU LEVEL PARTS.

PARTS LIST



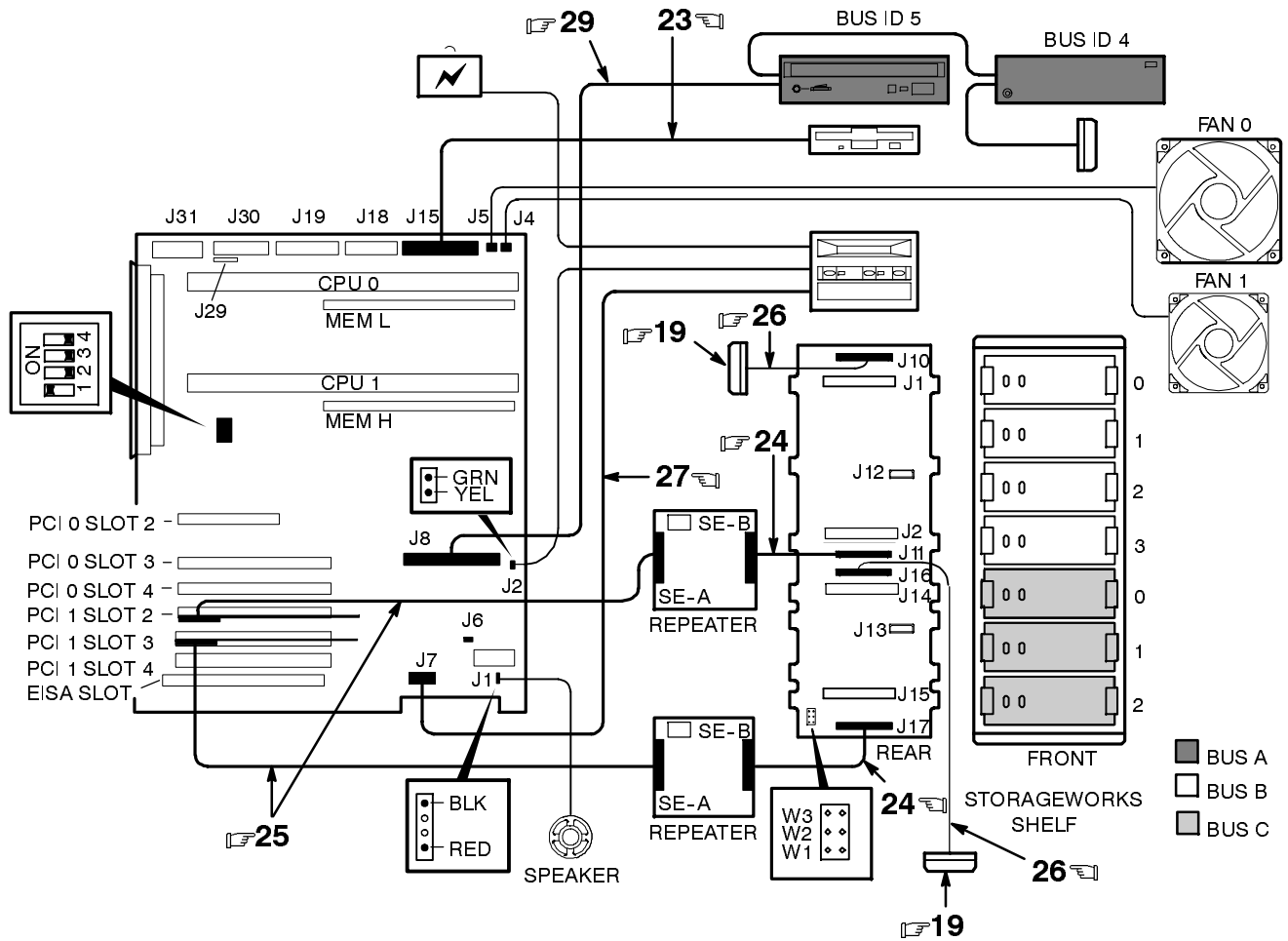
DUAL CONTROLLER ULTRA SCSI CONFIGURATION

IP-3041899-03

Figure 3. System Box Enclosure Assembly (Sheet 3 of 4)

INDICATES FRU LEVEL PARTS.

PARTS LIST



OPTIONAL TRIPLE CONTROLLER SPLIT BACKPLANE ULTRA SCSI CONFIGURATION

IP-3041899-04

Figure 3. System Box Enclosure Assembly (Sheet 4 of 4)

FIG. & ITEM NO.	DESCRIPTION	DIGITAL PART NO.	ECO CUT-IN 30-41899 00008	USED ON CODE	REF FIG NO.
3-	ENCLOSURE, SYSTEM BOX	30-41899-03			2
1	*Frame Assembly, Main	70-33336-01			
☞ 2	*Cover Assembly, (Top/Both Sides)	70-31347-02			
☞ 3	*Panel Assembly (Front)	70-31345-03			
4	*Frame, Storage (Right)	74-48642-01			
5	*Frame, Storage (Left)	74-48642-02			
☞ 6	*Microswitch Assembly	70-31348-01			
☞ 7	*Backplane, StorageWorks	54-23365-01			
☞ 8	*Speaker Assembly	70-31349-01			
9	*Bracket, Rear Assembly	70-33324-01			
10	*Cover, 50-Pin	74-48804-02			
11	*Screw, Pan Hd, M3 x 6 mm	90-09984-20			
12	*Bracket Assembly, Fan Shield	70-33316-01			
☞ 13	*Fan Assembly (92 mm)	70-31350-01			
☞ 14	*Fan Assembly (120 mm)	70-31351-01			
☞ 15	*Floppy Drive, 3.5 Inch (1.44 MB)	RX23L-AB			
☞ 16	*Module, SCSI Bus Extender	30-48985-01			
☞ 17	*Module, OCP	54-23302-02			
☞ 18	*Cover, Panel, 5 1/4 Inch	74-49537-02			
☞ 19	*Terminator, 68-Pin SCSI, External	12-41768-03			
20	*Bumper, Round Rubber (Adhesive Backed)	90-11461-01			
21	*Clip, EMI Ground	74-46487-01			
☞ 22	*CABLE ASSEMBLY, DC POWER SUPPLY	70-31346-01			
	**Harness, Power Supply Signal/Misc. (15-Pin)	17-03965-01			
	**Harness, Power Supply +5V (24-Pin)	17-03966-01			
	**Harness, Power Supply +3.3V (20-Pin)	17-03968-01			
	**Harness, Power Supply Storage (12-Pin)	17-03969-01			
☞ 23	*Cable, Floppy Drive (34-Pin)	17-03970-02			
☞ 24	*Cable, SCSI, 68 Cond. (StorageWorks to SCSI Bus Extender Module)	17-04022-03			
☞ 25	*Cable, SCSI, 68 Cond. (SCSI Bus Extender Module to SCSI Bus Controller Card)	17-04143-04			
☞ 26	*Cable, SCSI, 68 Cond. (StorageWorks to External Port)	17-04019-02			
☞ 27	*Cable, OCP Module (10-Pin)	17-03971-01			
☞ 28	*Cable, Internal StorageWorks Jumper (68-Pin)	17-04021-01			
☞ 29	*Cable, 50 Cond., Flat (MLB (J8) to RMD)	17-04685-01			
☞ 30	*Harness, 4 Cond. (SCSI Bus Extender Module to StorageWorks)	17-04700-01			
31	*Clamp, Cable (Adhesive Mount)	12-44237-01			
32	*Tie, Cable	90-09617-00			

PART NUMBER/DESCRIPTION INDEX 

INDEX BY DIGITAL PART NUMBER

DIGITAL AlphaServer 1200

PART NUMBER	DESCRIPTION	FIG.-ITEM NUMBER
12-41768-03	Terminator, 68-Pin SCSI, External	3-19
12-44237-01	Clamp, Cable (Adhesive Mount)	3-31
17-03965-01	Harness, Power Supply Signal/Misc. (15-Pin)	3-22
17-03966-01	Harness, Power Supply +5V (24-Pin)	3-22
17-03968-01	Harness, Power Supply +3.3V (20-Pin)	3-22
17-03969-01	Harness, Power Supply Storage (12-Pin)	3-22
17-03970-02	Cable, Floppy Drive (34-Pin)	3-23
17-03971-01	Cable, OCP Module (10-Pin)	3-27
17-04019-02	Cable, SCSI, 68 Cond. (StorageWorks to External Port)	3-26
17-04021-01	Cable, Internal StorageWorks Jumper (68-Pin)	3-28
17-04022-03	Cable, SCSI, 68 Cond. (StorageWorks to SCSI Bus Extender Module)	3-24
17-04143-04	Cable, SCSI, 68Cond. (SCSI Bus Extender Module to SCSI Bus Controller Card)	3-25
17-04195-01	Cable, Power Supply Current Sharing (3-Pin)	2-2
17-04685-01	Cable, 50 Cond., Flat, (MLB (J8) to RMD)	3-29
17-04700-01	Harness, 4 Cond. (SCSI Bus Extender Module to StorageWorks)	3-30
30-41899-03	Enclosure, System Box	2-3, 3-N/A
30-43120-02	Power Supply, 450W	2-4
30-48985-01	Module, SCSI Bus Extender	3-16
36-36842-01	Label, CE Mark	1-6
36-37522-10	Label, Nameplates, Decals	2-5
36-43278-01	Label, Composite Set, Blank	1-7
36-43629-03	Label, Customer Installation	2-6
37-01507-01	Package Assembly (Not Shown)	1-8
54-23302-02	Module, OCP	3-17
54-23365-01	Backplane, StorageWorks	3-7
54-25147-01	Module, Main Logic Board (MLB) (added)	2-7
54-25147-02	Module, Main Logic Board (MLB) (added)	2-7
54-25149-01	Module, Riser Card	2-8
54HHA-AA	AlphaServer 1200 5/400 KERNEL ASSEMBLY	1-A
54HHA-AB	AlphaServer 1200 5/400 KERNEL ASSEMBLY	1-B
54KHA-AA	AlphaServer 1200 5/533 KERNEL ASSEMBLY	1-C
54KHA-AB	AlphaServer 1200 5/533 KERNEL ASSEMBLY	1-D
54ZHA-AA	AlphaServer 1200 w/o CPU/Memory or I/O	1-1, 2-N/A
70-31345-03	Panel Assembly (Front)	3-3
70-31346-01	CABLE ASSEMBLY, DC POWER SUPPLY	3-22
70-31347-02	Cover Assembly (Top/Both Sides)	3-2
70-31348-01	Microswitch Assembly	3-6
70-31349-01	Speaker Assembly	3-8
70-31350-01	Fan Assembly (92 mm)	3-13
70-31351-01	Fan Assembly (120 mm)	3-14
70-33316-01	Bracket Assembly, Fan Shield	3-12
70-33324-01	Bracket, Rear Assembly	3-9
70-33336-01	Frame Assembly, Main	3-1

INDEX BY DIGITAL PART NUMBER
DIGITAL AlphaServer 1200

PART NUMBER	DESCRIPTION	FIG.-ITEM NUMBER
74-45644-03	Bezel, Blank	2-12
74-46487-01	Clip, EMI Ground	3-21
74-48642-01	Frame, Storage (Right)	3-4
74-48642-02	Frame, Storage (Left)	3-5
74-48804-02	Cover, 50-Pin	3-10
74-49537-02	Cover, Panel, 5 1/4 Inch	3-18
90-00049-01	Screw, Sems Pan Hd 6-32 x .25	2-9
90-09617-00	Tie, Cable	3-32
90-09984-20	Screw, Pan Hd M3 x 6 mm	2-10, 3-11
90-09984-29	Screw, Sems Pan Hd M3.5 x 8 mm	2-11
90-10961-01	Screw, Pan Hd M3 x 4 mm	2-13
90-11461-01	Bumper, Round Rubber (Adhesive Backed)	3-20
B3007-AA	Module, CPU EV5.6 (400 MHz)	1-2
B3007-CA	Module, CPU EV5.6 (533 MHz)	1-2
DE500-AA	Card, PCI Fast 10/100 Ethernet	1-3
H8571-J	Adapter, DECstation 2000, 9-Pin Serial	1-5
KZPBA-CA	Controller, SCSI, FWSE, 1 Port, PCI	1-4
RRD46-AB	CD-ROM (12X) SCSI White (deleted)	2-1
RRD46-AC	CD-ROM (12X) SCSI White 600 MG TG Blue (added)	2-1
RX23L-AB	Floppy Drive, 3.5 Inch (1.44 MB)	3-15

INDEX BY DIGITAL PART DESCRIPTION
DIGITAL AlphaServer 1200

DESCRIPTION	PART NUMBER	FIG.-ITEM NUMBER
Adapter, DECstation 2000, 9-Pin Serial	H8571-J	1-5
AlphaServer 1200 5/400 KERNEL ASSEMBLY	54HHA-AA	1-A
AlphaServer 1200 5/400 KERNEL ASSEMBLY	54HHA-AB	1-B
AlphaServer 1200 5/533 KERNEL ASSEMBLY	54KHA-AA	1-C
AlphaServer 1200 5/533 KERNEL ASSEMBLY	54KHA-AB	1-D
AlphaServer 1200 w/o CPU/Memory or I/O	54ZHA-AA	1-1, 2-N/A
Backplane, StorageWorks	54-23365-01	3-7
Bezel, Blank	74-45644-03	2-12
Bracket Assembly, Fan Shield	70-33316-01	3-12
Bracket, Rear Assembly	70-33324-01	3-9
Bumper, Round Rubber (Adhesive Backed)	90-11461-01	3-20
CABLE ASSEMBLY, DC POWER SUPPLY	70-31346-01	3-22
Cable, 50 Cond., Flat, (MLB (J8) to RMD)	17-04685-01	3-29
Cable, Floppy Drive (34-Pin)	17-03970-02	3-23
Cable, Internal StorageWorks Jumper (68-Pin)	17-04021-01	3-28
Cable, OCP Module (10-Pin)	17-03971-01	3-27
Cable, Power Supply Current Sharing (3-Pin)	17-04195-01	2-2
Cable, SCSI, 68 Cond. (StorageWorks to External Port)	17-04019-02	3-26
Cable, SCSI, 68 Cond. (StorageWorks to SCSI Bus Extender Module)	17-04022-03	3-24
Cable, SCSI, 68Cond. (SCSI Bus Extender Module to SCSI Bus Controller Card)	17-04143-04	3-25
Card, PCI Fast 10/100 Ethernet	DE500-AA	1-3
CD-ROM (12X) SCSI White (deleted)	RRD46-AB	2-1
CD-ROM (12X) SCSI 600MB TG Blue (added)	RRD46-AC	2-1
Clamp, Cable (Adhesive Mount)	12-44237-01	3-31
Clip, EMI Ground	74-46487-01	3-21
Controller, SCSI, FWSE, 1 Port, PCI	KZPBA-CA	1-4
Cover Assembly (Top/Both Sides)	70-31347-02	3-2
Cover, 50-Pin	74-48804-02	3-10
Cover, Panel, 5 1/4 Inch	74-49537-02	3-18
Enclosure, System Box	30-41899-03	2-3, 3-N/A
Fan Assembly (120 mm)	70-31351-01	3-14
Fan Assembly (92 mm)	70-31350-01	3-13
Floppy Drive, 3.5 Inch (1.44 MB)	RX23L-AB	3-15
Frame Assembly, Main	70-33336-01	3-1
Frame, Storage (Left)	74-48642-02	3-5
Frame, Storage (Right)	74-48642-01	3-4
Harness, 4 Cond. (SCSI Bus Extender Module to StorageWorks)	17-04700-01	3-30
Harness, Power Supply +3.3V (20-Pin)	17-03968-01	3-22
Harness, Power Supply +5V (24-Pin)	17-03966-01	3-22
Harness, Power Supply Signal/Misc. (15-Pin)	17-03965-01	3-22
Harness, Power Supply Storage (12-Pin)	17-03969-01	3-22
Label, CE Mark	36-36842-01	1-6
Label, Composite Set, Blank	36-43278-01	1-7
Label, Customer Installation	36-43629-03	2-6
Label, Nameplates, Decals	36-37522-10	2-5

INDEX BY DIGITAL PART DESCRIPTION
DIGITAL AlphaServer 1200

DESCRIPTION	PART NUMBER	FIG.-ITEM NUMBER
Microswitch Assembly	70-31348-01	3-6
Module, CPU EV5.6 (400 MHz)	B3007-AA	1-2
Module, CPU EV5.6 (533 MHz)	B3007-CA	1-2
Module, Main Logic Board (MLB) (deleted)	54-25147-01	2-7
Module, Main Logic Board (MLB) (added)	54-25147-02	2-7
Module, OCP	54-23302-02	3-17
Module, Riser Card	54-25149-01	2-8
Module, SCSI Bus Extender	30-48985-01	3-16
Package Assembly (Not Shown)	37-01507-01	1-8
Panel Assembly (Front)	70-31345-03	3-3
Power Supply, 450W	30-43120-02	2-4
Screw, Pan Hd M3 x 4 mm	90-10961-01	2-13
Screw, Pan Hd M3 x 6 mm	90-09984-20	2-10, 3-11
Screw, Sems Pan Hd 6-32 x .25	90-00049-01	2-9
Screw, Sems Pan Hd M3.5 x 8 mm	90-09984-29	2-11
Speaker Assembly	70-31349-01	3-8
Terminator, 68-Pin SCSI, External	12-41768-03	3-19
Tie, Cable	90-09617-00	3-32